

Plants Poisonous or Harmful to Horses

Krishona Martinson, PhD, U of M; Lynn Hovda, DVM, MS, MN Racing Commission; and Mike Murphy, DVM, PhD, U of M

Colic



Common Cocklebur
Xanthium strumarium



Corn Cockle Seed
Agrostemma githago



Mustard Seed
Brassica species

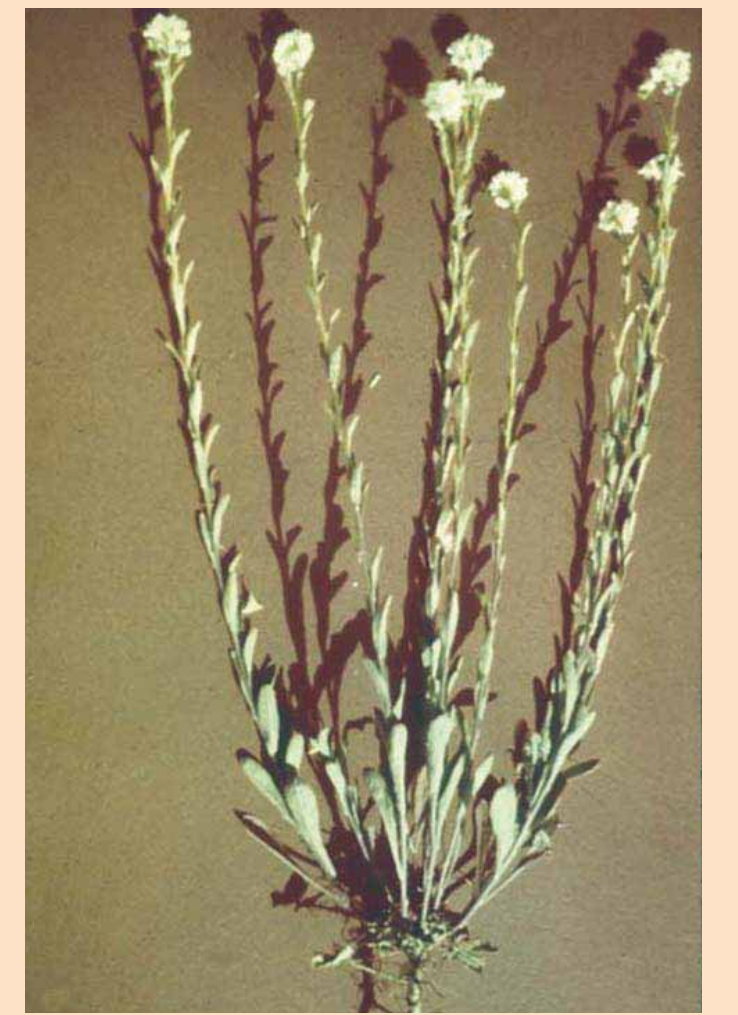


Acorns
Quercus species

Stocking-up/Founder



Black Walnut Shavings
Juglans nigra



Hoary Alyssum
Berteroa incana

Seizure/Muscle Twitch



Brackenfern
Pteridium aquilinum



Poison Hemlock
Conium maculatum



Waterhemlock
Cicuta species

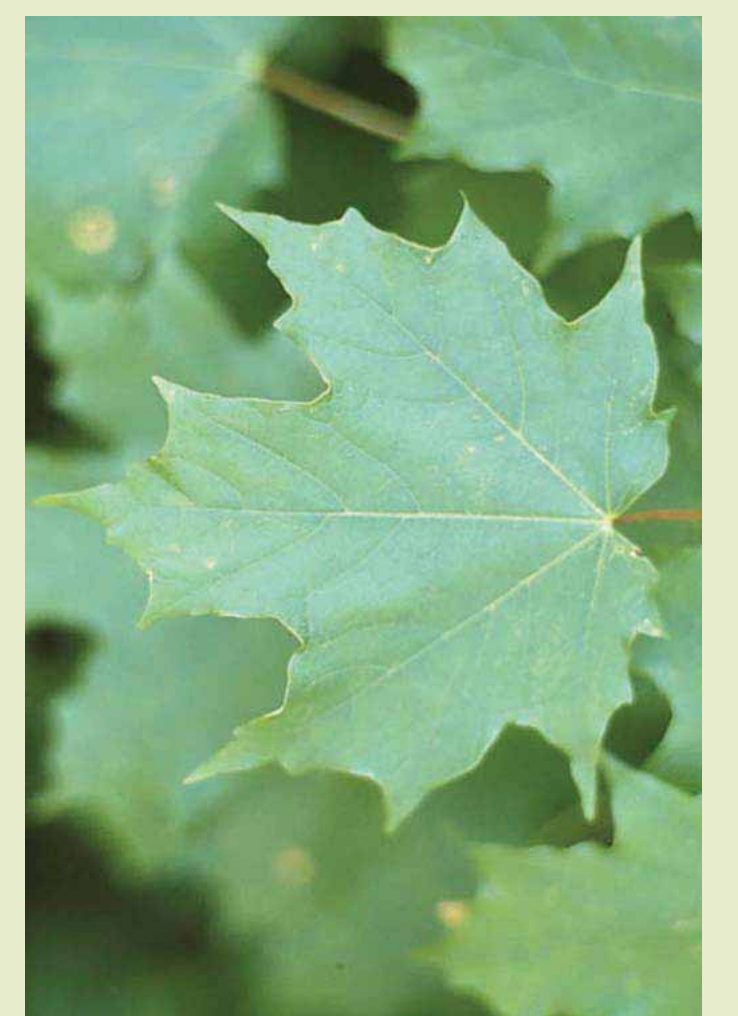


Field Horsetail
Equisetum arvense

Red/Brown Urine



White Snakeroot
Ageratina altissima



Maple
Acer species

Death



Chokecherry
Prunus virginiana



Foxglove
Digitalis purpurea



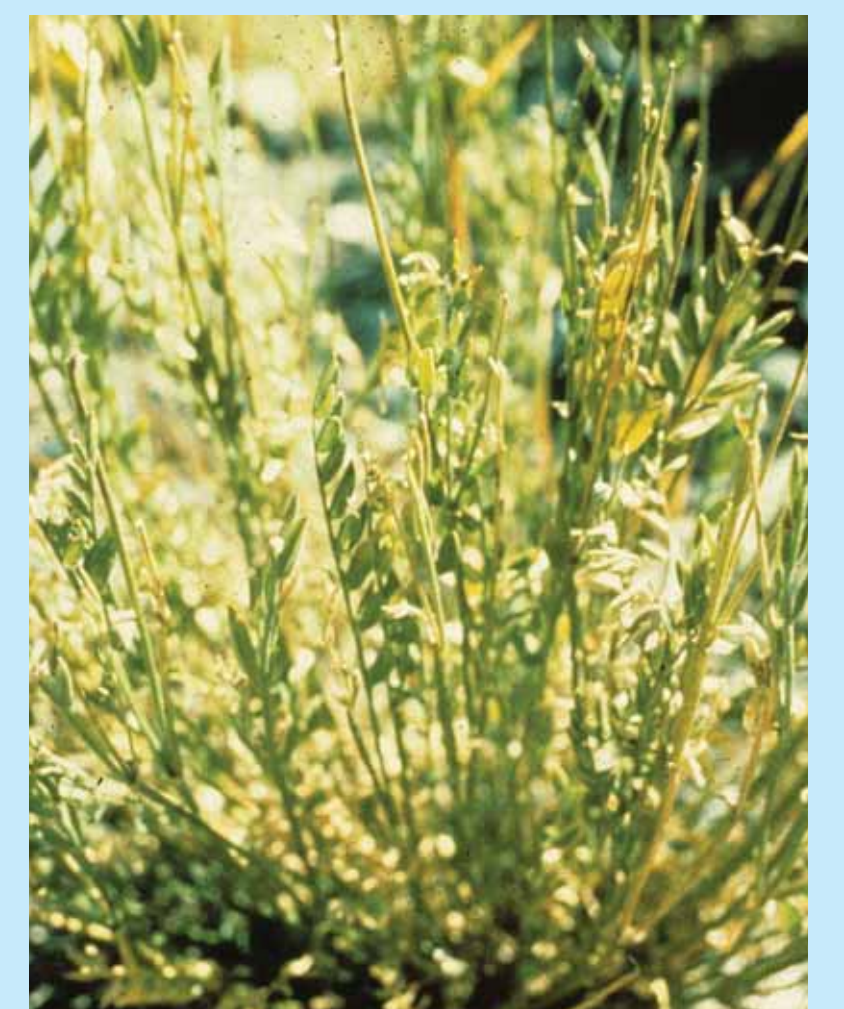
Yew
Taxus cuspidate

Reproductive Problems/ Dry Gangrene



Endophyte Infected Fescue
Lolium and festuca species

Aimless Wandering



Field Locoweed
Oxytropis camoestrus

Mouth Blisters



Buttercup
Ranunculus species



Foxtail
Setaria species

Sunburn



Mold Infected Clover
Melilotus and Trifolium species

Slobbers



Mold Infected Red Clover
Trifolium pretense

Bleeding



Moldy Sweetclover
Melilotus species

See your veterinarian or extension educator for more information on plants poisonous or harmful to horses. Find more University of Minnesota Extension Service horse-related information and educational opportunities on www.extension.umn.edu/horse.
The University of Minnesota Extension Service is an equal opportunity educator and employer. Copyright 2006, Regent of the University of Minnesota. All rights reserved.



This poster was funded by the Minnesota Racing Commission

IN PARTNERSHIP ...

College of Veterinary Medicine
UNIVERSITY OF MINNESOTA

UNIVERSITY OF MINNESOTA
Extension
SERVICE

UNIVERSITY OF MINNESOTA
Equine
Center