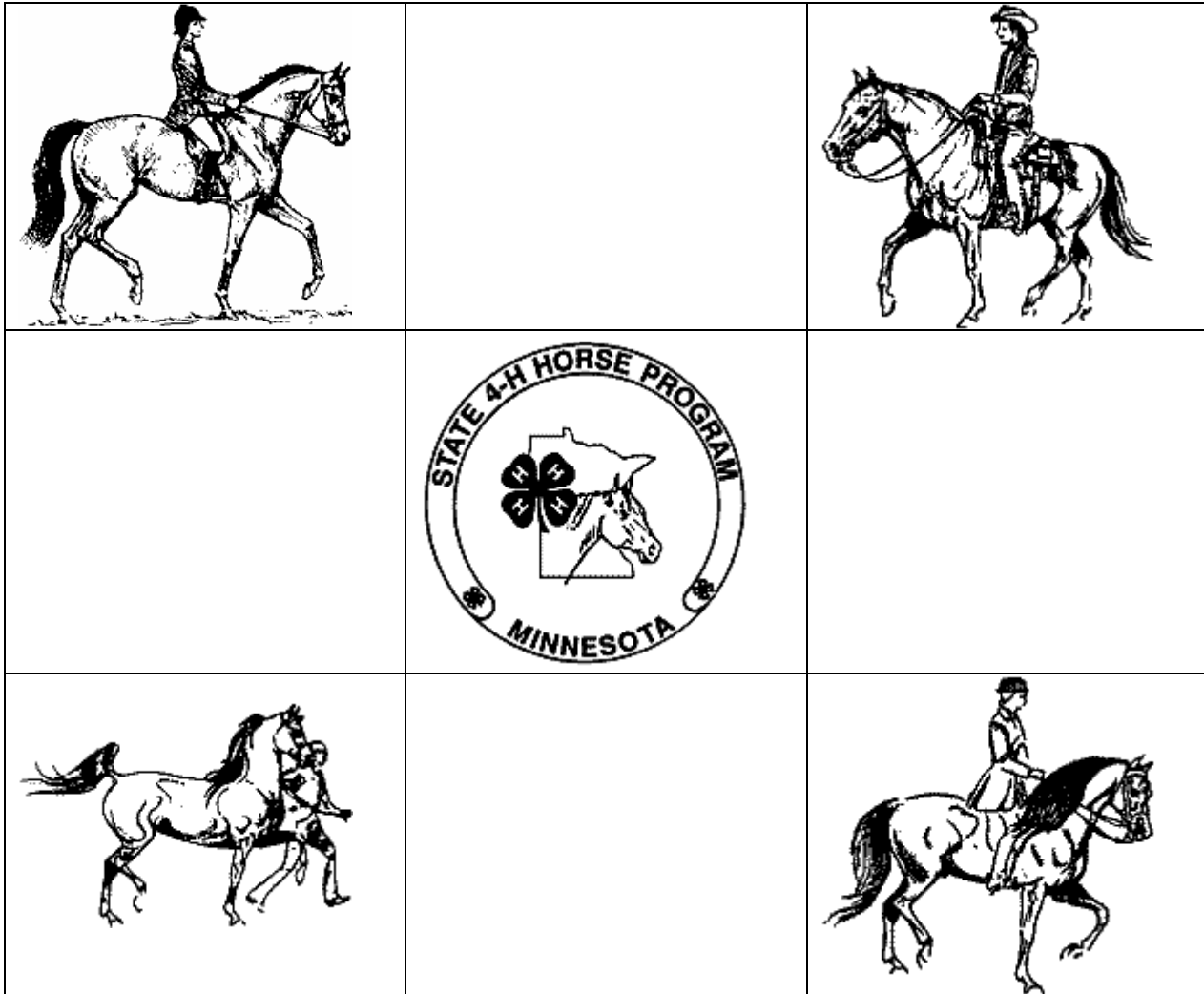


Minnesota 4-H Horse Member Achievement Program



4-H'er's Name _____

Year Born _____

County _____

Date Program Started _____

Welcome to the 4-H Horse Member Achievement Program.

This program has been designed to help you explore many exciting and fun parts of the 4-H horse program. As you move through the program you will:

- Find the horse project more interesting and enjoyable
- Develop knowledge and understanding necessary for proper care, maintenance, and handling of horses
- Develop project skills and personal skills
- Advance according to your individual abilities and interests
- Become eligible for county and state awards

Who Is Eligible?

All 4-H'ers enrolled in any phase of the 4-H horse project or Horse Training Program are required to participate in the Horse Member Achievement Program in addition to keeping project records. The Horse Training Program is for members who are starting out with a horse that has not previously been trained. A 4-H'er who is working on the Horse Training Program will be evaluated on the Horse Training Program and the Horse Member Achievement Program at the same time.

How to Use the Program

Each level **MUST** be completed in order; do not skip around. As you accomplish each skill, check it off in the space provided. Once all skills have been passed and your project leader or county achievement program chair has approved the level, you are eligible for a completion certificate and ready to advance to the next level. Level 6 must be approved by an official judge and only at the State 4-H Horse Show. You may take up to two years to pass each level. You must complete at least one-half of a level each year that you are in the horse project. You must include this booklet with your horse project record in order to qualify for county awards and trips.

Resources to Use

Answers to most questions can be found in your project manuals. Public libraries, county extension offices, equine books and magazines, project leaders, University of Minnesota and the Minnesota 4-H Horse Project Memorial Library will also be good resources.

GOOD LUCK

This publication was developed by Lyle Wick, Rae Ann Bartz, Lynn Watland, and Gladys Carlson, 4-H Horse Project leaders.

Faculty Reviewers:

- **Bradley W. Rugg**, Program Director - Fairs and Animal Science, Center for 4-H Youth Development, U of MN
- **Kristina G. Hostager**, Regional Extension Educator
4-H Youth Development, Regional Center - Rochester
- **Renee D. Kostick**, Regional Extension Educator
4-H Youth Development, Regional Center - Mora

The University of Minnesota is committed to the policy that all persons shall have equal access to its programs, facilities, and employment without regard to race, color, creed, religion, national origin, sex, age, marital status, disability, public assistance status, veteran status, or sexual orientation.”

Copyright © 2005, Regents of the University of Minnesota. All rights reserved.
For ordering information call (800) 876-8636.

Level 1

Date Started _____

SELECTION AND JUDGING

____ 1. Define:

Mare _____

Stallion _____

Gelding _____

Breed (of horses) _____

____ 2. Describe five coat colors.

____ 3. Identify your horse's breed or breed type, sex, age, coat color, and markings.

Breed _____

Sex _____ Age: _____

Markings _____

Color _____

____ 4. List five horse breeds and the place of origin for each.

Breed

Origin

a _____

b _____

c _____

d _____

e _____

SAFETY

____ 5. List, then demonstrate, four safety precautions when working with horses on the ground.

a. _____

b. _____

c. _____

d. _____

____ 6. List, then demonstrate, five safety and courtesy rules used when riding or showing your horse.

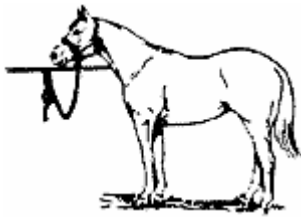
a. _____

b. _____

c. _____

d. _____

e. _____



____ 7. Explain, then demonstrate, how your horse should be safely tied in relation to:

Equipment used _____

Length of tie _____

Location _____

Height _____

Type of knot _____

HORSE CARE, HEALTH, AND FEEDING

____ 8. List five pieces of grooming equipment, explaining their purposes. Demonstrate their uses on your horse.

Equipment	Purpose
-----------	---------

- | | |
|----------|-------|
| a. _____ | _____ |
| b. _____ | _____ |
| c. _____ | _____ |
| d. _____ | _____ |
| e. _____ | _____ |

____ 9. Explain how often you feed and water your horse.

____ 10. List two types of hay and two types of grain.

Hay	Grain
-----	-------

- | | |
|----------|-------|
| a. _____ | _____ |
| b. _____ | _____ |

What do you feed *your* horse? _____

____ 11. List three health precautions to follow when taking your horse to a show.

- a. _____
- b. _____
- c. _____

HORSEMANSHIP

____ 12. List the areas of the horse that should be clipped for showing.

____ 13. List the proper attire for a showmanship class, either Western or English.

PERSONAL DEVELOPMENT/LEADERSHIP

____ 14. Describe one personal development or leadership activity in which you have participated in this year. (See examples listed at the end of this booklet. Different activities must be listed in each level.)

Activity _____

Where? _____

What did you learn? _____

<p>_____</p> <p>Leader's Signature</p>	<p>_____</p> <p>Date Level 1 Approved</p>
---	--

Level 2

Date Started _____

SELECTION AND JUDGING

____ 1. Define the following terms.

Filly _____

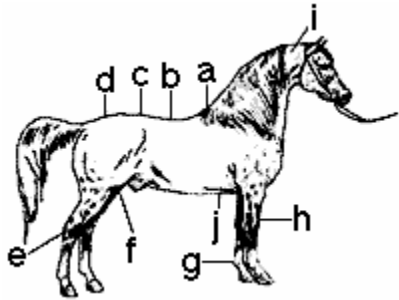
Colt _____

Foal _____

Hand _____

Conformation _____

____ 2. Identify the following parts of the horse and then locate each part on your horse.



a. _____ f. _____

b. _____ g. _____

c. _____ h. _____

d. _____ i. _____

e. _____ j. _____

EQUIPMENT

____ 3. Explain where each of the following parts are located on a bridle, then locate each on your bridle.

Browband _____

Crownpiece _____

Throatlatch _____

Bit _____

Reins _____

Cheekpiece _____

____ 4. Name three types of saddles.

a. _____

b. _____

c. _____

HEALTH CARE PRACTICES

____ 5. Describe the proper care of horses' feet.

____ 6. List three visible signs of a healthy horse.

a. _____

b. _____

c. _____

____ 7. What are the normal temperature, pulse, and respiration readings of a horse?

_____ temperature _____ pulse _____ respiration

____ 8. List three visible signs of an unhealthy horse.

a. _____

b. _____

c. _____

____ 9. List six items needed in a first-aid kit for your horse.

a. _____ d. _____

b. _____ e. _____

c. _____ f. _____

____ **10.** List three external and three internal parasites of horses and describe proper prevention and treatment of each.

External Parasites	Prevention	Treatment
a. _____	_____	_____
b. _____	_____	_____
c. _____	_____	_____

Internal Parasites	Prevention	Treatment
a. _____	_____	_____
b. _____	_____	_____
c. _____	_____	_____

HORSEMANSHIP

____ **11.** Name four natural and three artificial aids used when riding or working a horse.

Natural	Artificial
a. _____	a. _____
b. _____	b. _____
c. _____	c. _____
d. _____	

____ **12.** Explain and demonstrate how to safely and properly execute a halter showmanship pattern.

Where? _____

Describe what you did and what you learned.

____ **14.** Activity 2

Where? _____

Describe what you did and what you learned.

PERSONAL DEVELOPMENT/ LEADERSHIP

Describe two personal development or leadership activities in which you have participated this year.

____ **13.** Activity 1 _____

_____	_____
Leader's Signature	Date Level 2 Approved

Level 3

Date Started _____

SELECTION AND JUDGING

____ 1. Describe three characteristics of each of the following breeds that make them unique.

Quarter horse

a. _____

b. _____

c. _____

Arabian

a. _____

b. _____

c. _____

Morgan

a. _____

b. _____

c. _____

Appaloosa

a. _____

b. _____

c. _____

Thoroughbred

a. _____

b. _____

c. _____

American Saddlebred

a. _____

b. _____

c. _____

Breed of your choice: _____

a. _____

b. _____

c. _____

____ 2. Name and describe the two paint and/or pinto coat color patterns.



a. _____

b. _____

HORSE CARE AND FEEDING

____ 3. Name three major nutrients needed in your horse's diet.

a. _____

b. _____

c. _____

____ 4. Describe the proper method of cooling down a hot horse.

HEALTH PRACTICES

____ 5. Complete the following chart on diseases.

Disease	Symptoms	Causes	Treatment
Strangles			
Rhino pneumonitis			
Tetanus			
Equine Encephalitis			
Influenza			

____ 6. List four diseases that can be prevented by a vaccination.

- a. _____
- b. _____
- c. _____
- d. _____

____ 7. Explain how and where to take a horse's temperature, pulse, and respiration. Demonstrate on your horse.

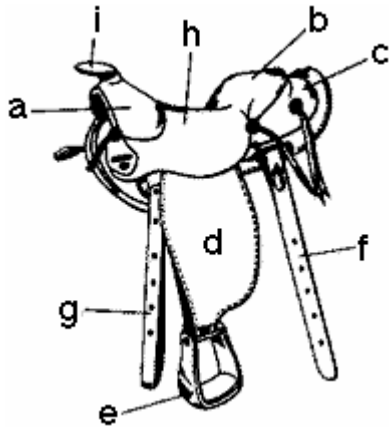
____ 8. Explain the differences between a snaffle and curb bit.

____ 9. List three types of snaffle bits and three types of curb bits.

- | Snaffle bits | Curb bits |
|--------------|-----------|
| a. _____ | a. _____ |
| b. _____ | b. _____ |
| c. _____ | c. _____ |

EQUIPMENT

___ 10. Identify the following parts of a stock saddle. Locate each part on your saddle.



- a. _____
- b. _____
- c. _____
- d. _____
- e. _____
- f. _____
- g. _____
- h. _____
- i. _____

HORSEMANSHIP

___ 11. Explain the proper cues to put your horse into the left lead. Demonstrate this procedure on your horse.

PERSONAL DEVELOPMENT/LEADERSHIP

Describe three personal development or leadership activities in which you have participated this year.

___ 12. Activity 1: _____

Where? _____

Describe what you did and what you learned.

___ 13. Activity 2: _____

Where? _____

Describe what you did and what you learned.

___ 14. Activity 3: _____

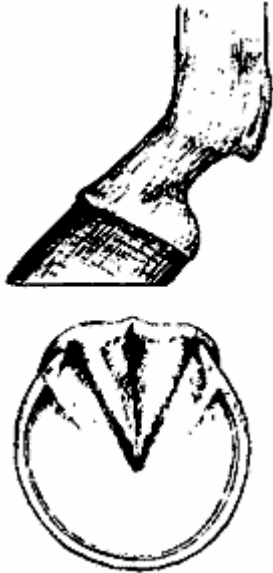
Where? _____

Describe what you did and what you learned.

_____ Leader's Signature	_____ Date Level 3 Approved
------------------------------------	---------------------------------------

SELECTION AND JUDGING

____ 1. Next to the drawing, write the name of each part (a through e).
Then in the column at right, describe the function of each part.



- a. Sole _____

- b. Frog _____

- c. Hoof-Wall _____

- d. Pastern _____

- e. Cannon _____

____ 2. Complete this chart on unsoundness (U) and blemishes (B).

Name	U/B	Location	Description	Effect on Horse's Usefulness
Navicular Disease				
Splints				
Thrush				
Bowed Tendon				
Founder				
Heaves				

____ 3. Describe the following gaits in reference to the number of beats, speed, and length of stride.

Walk _____

Jog _____

Trot _____

Extended trot _____

Canter _____

Lope _____

SAFETY

____ 4. Explain the correct method to pick up and hold your horse's feet, front, and hind. Demonstrate with your horse.

HORSE CARE, HEALTH, AND FEEDING

____ 5. Name four visual characteristics of good horse hay.

a. _____

b. _____

c. _____

d. _____

____ 6. Explain why each of the following is important in the diet.

a. Protein _____

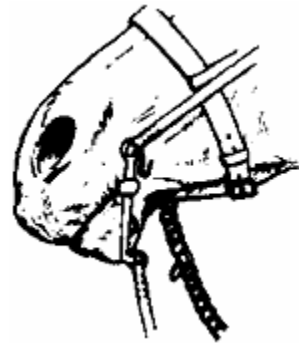
b. TDN _____

c. Dry matter _____

d. Calcium and phosphorus _____

e. Vitamins _____

EQUIPMENT



____ 7. Describe the proper fit of the following equipment, then demonstrate with your horse.

a. Bit _____

b. Throat latch _____

c. Curb strap or chain _____

d. Halter _____

e. Cinch or girth _____

____ 8. Explain why the following equipment is used on a horse's legs.

a. Splint boots _____

b. Track or elastic bandages _____

c. Bell boots _____

d. Quilted or fleece pads _____

HORSEMANSHIP



____ 9. Describe the proper position of your body, legs, feet, and hands in stock seat equitation, then demonstrate this position.

____ 10. Explain how to teach a horse to back while you are on the ground, and how to cue the horse to back while you are mounted. Demonstrate backing your horse from the ground and while you are mounted.

PERSONAL DEVELOPMENT/LEADERSHIP
Describe three personal development or leadership activities in which you have participated this year.

____ 11. Activity 1 _____

Where? _____

Describe what you did and what you learned.

____ 12. Activity 2 _____

Where? _____

Describe what you did and what you learned.

____ 13. Activity 3 _____

Where? _____

Describe what you did and what you learned.

_____ Leader's Signature	_____ Date Level 4 Approved
------------------------------------	---------------------------------------

Level 5

Date Started _____

SELECTION AND JUDGING

____ **1.** Describe these conformation faults.

a. Pigeon-toed _____

b. Sickle-hocked _____

c. Base narrow _____

d. Cow-hocked _____

e. Coon-footed _____

____ **2.** Describe these defects in a horse's action.

a. Paddling _____

b. Forging _____

c. Lameness _____

d. Interfering _____

e. Rope-walking _____

HORSE CARE, HEALTH, AND FEEDING

____ **3.** Explain four purposes for shoeing a horse.

a. _____

b. _____

c. _____

d. _____

____ **4.** Define colic _____

Symptoms _____

Causes _____

Treatment _____

REPRODUCTION AND GENETICS

____ **5.** Define the following terms.

a. Sire _____

b. Pedigree _____

c. Purebred _____

d. Estrus _____

e. Dam _____

f. Gestation _____

HORSEMANSHIP

___ 6. Complete the following chart.

	STOCK SEAT	SADDLE SEAT	HUNT SEAT
TACK			
CLOTHING			
RIDER'S POSITION			

___ 7. Describe the following for a 4-H pleasure or equitation class.

Class _____

Rider's proper position _____

Correct appointments _____

Correct class routine/pattern _____

Possible faults of horse and/or rider _____



___ 8. Explain the cues used for the following movements of your horse, then demonstrate each while you are mounted.

Sidepass _____

Turn on forehand _____

Turn on haunches _____

Two-track _____

Halt _____

_____ **9.** The horse has a great power of association. Explain what this means and why this is important to the rider.

CAREERS



_____ **10.** Describe four careers associated with the horse industry.

a. _____

b. _____

c. _____

d. _____

PERSONAL DEVELOPMENT/LEADERSHIP

Describe three personal development or leadership activities in which you have participated this year.

_____ **11.** Activity 1 _____

Where? _____

Describe what you did and what you learned.

_____ **12.** Activity 2 _____

Where? _____

Describe what you did and what you learned.

_____ **13.** Activity 3 _____

Where? _____

Describe what you did and what you learned.

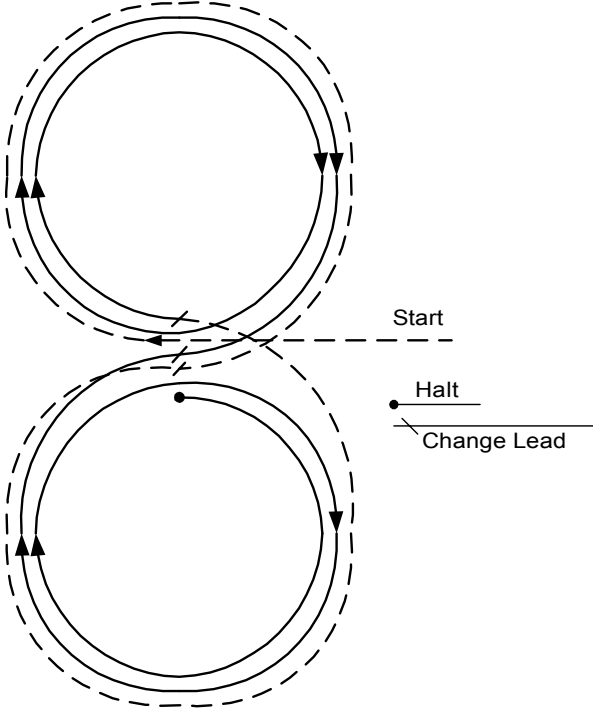
_____	_____
Leader's Signature	Date Level 5 Approved

Level 6

You may try to pass this level at the State 4-H Horse Show only after successfully completing the first five levels and with the recommendation of the county project leader or county extension educator. You must have owned the horse for at least one year prior to the show. Each exercise is worth up to 10 points. A score of 70 is required to pass this level. The movements of each exercise should be performed in one continuous pattern. Refer to the *4-H Horse Program Rule Book* and *State 4-H Horse Show and Events Rules and Class List* for a complete description of requirements for this class.

Score

	1 Starting at the center of the arena, walk forward four steps and backward four steps, being sure that your horse is collected. Settle your horse a few seconds before asking him to back.
	2 Sidestep right and left six steps (or three crossovers) in each direction. Stop your horse before changing directions.
	3 Turn on the forehand, 360 degrees in each direction with the pivot foot kept within a 3-foot imaginary circle. This must be a continuous movement with no backing around the pivot foot.
	4 Turn on the haunches, 360 degrees in each direction with the pivot foot kept within a 3-foot imaginary circle. This must be a continuous movement with no backing around the pivot foot.
	5 Walk six steps. Leg-yield (or two-track) at a walk four steps to the left, followed by four straight steps, then four steps to the right, followed by four straight steps
	6 From one end of the arena, start a jog trot from a standing position without posting and without walking steps. Halt at opposite end of arena and turn. Halt.
	7 From the entrance of the arena, demonstrate a posting trot on a straight-away down center of the arena. Post on either diagonal, changing diagonals at least three times. Walk to center of the arena and halt.

	<p>8 Execute three figure 8s. Execute the first figure 8 at a posting trot, demonstrating correct diagonals. Without halting, execute a second figure 8 at a canter/lope using a simple change of lead, coming down to a walk at the center of figure 8. Halt. Execute a third figure 8 at a canter/lope, coming down to the trot at the center of figure 8. Halt.</p>
	<p>9 Beginning at the center of the arena, execute one figure 8 at the canter / lope starting to the right, demonstrating one complete flying change of lead.</p> <p>Without interruption, execute the second flying change of lead and continue on with two circles to the right.</p> <p>Without halting, execute the third flying change of lead and continue on with two circles to the left.</p> <p>Halt.</p> 
	<p>10 From the far end of the arena, start from a walk down the center of the arena. Canter straight forward with two complete flying changes of lead on the straight-away. Halt, turn, and canter back to center of the arena. Halt your horse and allow him to settle; square him up and stand for 10 seconds</p>
	<p>Total (A score of 70 is required to pass this level.)</p>

<hr style="border: none; border-top: 1px solid black; margin-bottom: 5px;"/> Judge's Signature	<hr style="border: none; border-top: 1px solid black; margin-bottom: 5px;"/> Date
---	--

PERSONAL DEVELOPMENT / LEADERSHIP ACTIVITIES

- ___ 1. Lead the Pledge of Allegiance or 4-H pledge at a 4-H meeting.
- ___ 2. Lead a song or game at a 4-H meeting.
- ___ 3. Preside at a 4-H project or club meeting.
- ___ 4. Write a news story for a local paper.
- ___ 5. Arrange for a film to be shown at your club meeting.
- ___ 6. Participate in a radio or television program.
- ___ 7. Present a demonstration or illustrated talk to your club or project group.
- ___ 8. Present a demonstration or illustrated talk to a group other than your 4-H group.
- ___ 9. Serve as a host for a 4-H meeting. See that everyone is welcomed and made comfortable.
- ___ 10. Participate in a community service project.
- ___ 11. Participate in a community pride project.
- ___ 12. Prepare a display (pictures, clippings, objects) that can be educational or helpful in stressing: clean air, clean land, or clean water; conserving natural resources, conserving energy; or practicing safety.
- ___ 13. Serve as chair of a club committee.
- ___ 14. Participate in a horse judging, bowl, speech / demonstration, or hippology contest.
- ___ 15. Serve as a junior leader for a 4-H horse group.
- ___ 16. Make arrangements for a tour by your project group.
- ___ 17. Attend a 4-H camp.
- ___ 18. Serve as a camp counselor.
- ___ 19. Attend a district or state animal science workshop.
- ___ 20. Serve as a clerk, show chairperson, or apprentice judge at a 4-H show.
- ___ 21. Attend 4-H Junior Leaders Conference.
- ___ 22. Develop and exhibit a science display related to horses.
- ___ 23. Explore a career associated with horses and report to your project group or community club.
- ___ 24. Secure a speaker to talk at one of your project meetings.
- ___ 25. Plan a fun activity for your club or project group that is separate from a regular meeting.
- ___ 26. Develop an option of your own with your leader's approval. (This may be used more than once.)
- ___ 27. Obtain one or more new horse members for your club.
- ___ 28. Help conduct a horse show.
- ___ 29. Help organize and conduct an educational tour or demonstration.
- ___ 30. Help organize and conduct a field day or judging event.
- ___ 31. Help a leader work with a younger member.
- ___ 32. Help organize, train, and participate in a mounted drill team.
- ___ 33. Help organize and conduct a trail ride.
- ___ 34. Serve as a counselor to younger 4-H members.
- ___ 35. Help organize a Horse Bowl.
- ___ 36. Help organize a Horse Skillathon.
- ___ 37. Organize and conduct a 4-H judging contest.

