

## Conservation Tillage Bus Tour *“Strip Tillage in Action”*

Producers, agricultural professionals, and government entities interested in conservation tillage are encouraged to attend.

Registration for the tour is \$25 and includes:

- ◆ Coach transportation
- ◆ Lunch & Refreshments
- ◆ Handouts

Space is limited to the first 50 respondents, so register by June 30, to ensure a spot!

Get ready for a day of information and invaluable connections with others in agricultural conservation.

For more information or to register for the tour, please call Liz Stahl at 888-241-4635 or e-mail stah0012@umn.edu.

3 CEUs have been applied for:  
(1.0 NM, 1.0 SW, and 1.0 CM)

Worthington Regional Extension Office  
1567 McMillan Street, Suite 6  
Worthington, MN 56187

UNIVERSITY OF MINNESOTA  
**EXTENSION**

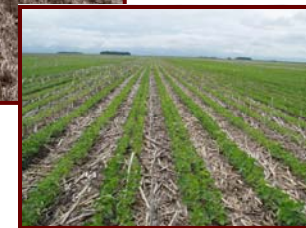
## Conservation Tillage Bus Tour

### *“Strip Tillage In Action”*

**Wednesday, July 2, 2008**

**Jackson, MN (8:00-4:00 p.m.)**

**Windom, MN (8:30-3:30 p.m.)**



UNIVERSITY OF MINNESOTA  
**EXTENSION**

*Sponsored By:*

**North Central Region  
SARE**

# Conservation Tillage Bus Tour “Strip Tillage in Action”

If you are interested in learning more about strip tillage, the University of Minnesota would like to invite you to attend a regional bus tour this July.

Strip tillage is a relatively new residue management tool for producers who would like to maintain residue without affecting yield due to delayed planting and emergence.

Strip tillage involves a fall tillage pass that clears a strip of soil 7 to 10



inches wide and loosens the soil 6 to 9 inches deep within the row.

Between crop rows, the residue is untouched, allowing for fast warm-up in the seedbed and maintaining heavy residue levels between the rows.

Residue between the rows allows for minimal erosion, increased water infiltration and holding capacity, and helps maintain the soil organic matter.

Various aspects of strip tillage will be highlighted including:

- ◆ Tillage and residue management based on rotation
- ◆ Managing rising input costs
- ◆ Equipment options
- ◆ Fertilizer timing and placement

Tour stops will include Windom, Jeffers, and Lamberton and will include both growers' fields and University of Minnesota's research plots. Speakers will include:

- ◆ Butch Eidem, Strip Till Producer
- ◆ Tom Muller, Strip Till Producer
- ◆ John Lamb, Extension Soil Scientist
- ◆ Jodi DeJong-Hughes, Extension Educator, Crops & Soils
- ◆ Liz Stahl, Extension Educator, Crops

*You may load the bus at either Burger King in Jackson at 8:00 a.m. or at Runnings in Windom at 8:30 a.m. The bus will return to Windom at 3:30 p.m. and to Jackson at 4:00 p.m.*

## Conservation Tillage Bus Tour “Strip Tillage in Action” Registration Wednesday, July 2, 2008

Name: \_\_\_\_\_

Address: \_\_\_\_\_

City: \_\_\_\_\_

State: \_\_\_\_\_ Zip: \_\_\_\_\_

Phone: \_\_\_\_\_

E-Mail: \_\_\_\_\_

*Space is limited, so please register by June 30, to secure a spot.*

- Enclosed is a check payable to the University of Minnesota for \_\_\_\_\_ person(s) attending at \$25 each for a total of \$\_\_\_\_\_.

### Mail Registration & Payment to:

Worthington Regional Extension Office  
1567 McMillan Street, Suite 6  
Worthington, MN 56187

### Or Register Online at:

[https://umnnext.cmiregistration.com/  
ProgramDetail.aspx/  
ConservationTillageBusTour](https://umnnext.cmiregistration.com/ProgramDetail.aspx/ConservationTillageBusTour)

### Or Register by Calling:

1-888-241-4635

*Must receive registration by June 30, 2008.*