

# Minnesota Beef Team

Volume 4  
July 1, 2005



## Beef Times

### 2005 MSCA Summer Tour and Trade Show

Wednesday, July 13, 2005

Minnesota State Fairgrounds, St. Paul, MN

Pre-registration deadline is July 6 (\$25/person), at the gate (\$30)

#### Tour Day Schedule:

6:00 am Trade Show Opens / Registration Begins

6:30 am First Tour Bus Departs

9:30 am Last Tour Bus Departs

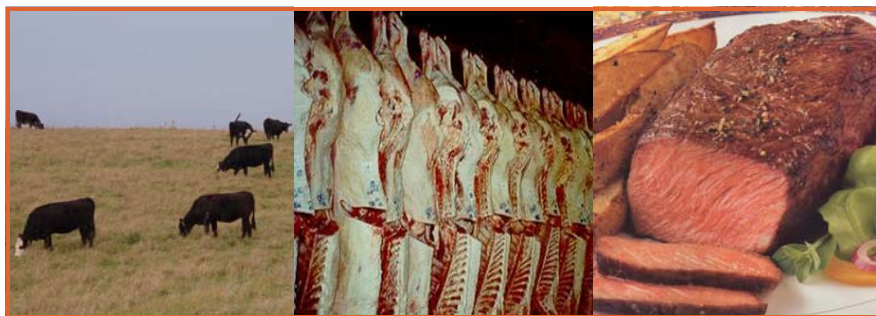
8:00 pm Trade Show Concludes

There will be a burger lunch and steak fry supper at the Fairgrounds

The Minnesota Beef Team is hosting this year's MSCA Summer Tour & Trade Show. The tour will focus on innovations from cow/calf seedstock operations to unique meat markets in successful grocery store chains. Tour stops will include:

- Kelley Land and Cattle Company
- McCullough Charolais
- Stockyard Meat Packing
- Endres Processing, LLC.
- Kowalski's Grocery Store
- Byerly's
- U of M at UMORE Park
- U of M Department of Animal Science

The summer tour is one of the largest gatherings of beef producers and industry representatives in the state. The tour and trade show committee invites all guests to attend this year's annual event. **For more information, visit: [www.extension.umn.edu/beef/](http://www.extension.umn.edu/beef/) or contact Denise Plonis at (218) 327-4490.**



### REPORTS AND UPCOMING EVENTS

#### 1. "NEW" Beef Team Website

The Beef Team website has been re-constructed to offer producers more timely information in an easy to use web-format. Visit the Beef Team website at: [www.extension.umn.edu/beef/](http://www.extension.umn.edu/beef/)

#### 2. 2005 /2006 Carcass Merit Program Registration

The Carcass Merit Program provides an opportunity for seedstock and commercial cow/calf producers to evaluate how their genetics perform in the feedlot and on the rail. Registration is \$25/head and entry deadline is September 26, 2005. Registration forms for the 2005/2006 Carcass Merit Program are available at: [www.extension.umn.edu/beef/](http://www.extension.umn.edu/beef/)

#### 3. BSE (Bovine Spongiform Encephalopathy) Update

USDA announces confirmation of second case of BSE. Visit the website at: [www.extension.umn.edu/beef/](http://www.extension.umn.edu/beef/) for additional information on current BSE issues.

For more information on upcoming events, contact Denise Plonis at (218) 327-4490 or visit the beef team website at: [www.extension.umn.edu/beef/](http://www.extension.umn.edu/beef/). If you have any comments or would no longer like to receive this newsletter, please e-mail your request to Ryon Walker at: [walke375@umn.edu](mailto:walke375@umn.edu)

The University of Minnesota is an equal opportunity educator and employer

UNIVERSITY OF MINNESOTA  
**Extension**  
SERVICE