

UNIVERSITY OF MINNESOTA
EXTENSION

Stormwater U

Stormwater Pond Management: Inventory

The first in a series on stormwater pond management

Case Study II: City of Victoria

Cara L. Geheren, P.E.

City Engineer

October 8, 2009

Minnetonka

Additional Sponsors:

 Minnesota Pollution Control Agency



Ramsey-Washington Metro  District



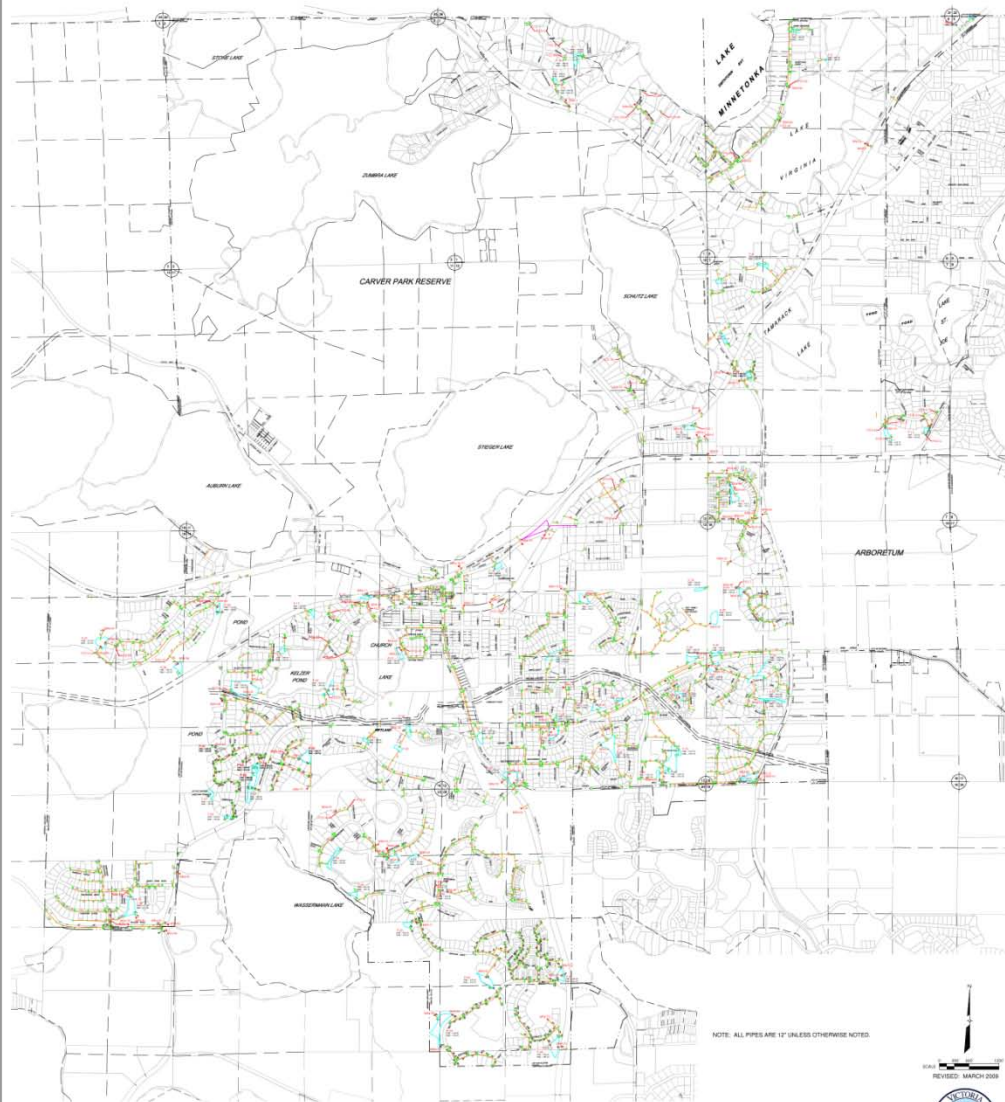
TKDA
ENGINEERING • ARCHITECTURE • PLANNING

City of Victoria

- Located 25 miles southwest of Twin Cities
- Currently nine square miles
- Rapid growth over past 20 years
 - 1990 Population: 2,300
 - 2000 Population: 4,500
 - Current Population: 6,665
- Ultimately 25 square miles
- Relatively small staff
- 70 Stormwater Ponds

Stormwater System Map

CITY OF VICTORIA



NOTE: ALL PIPES ARE 12" UNLESS OTHERWISE NOTED



TKDA
ENGINEERS • ARCHITECTS • PLANNERS

STORM SEWER (NPDES MS-4)

- Pipes
 - Catch Basins
 - Manholes
 - Pollution Control Devices
 - Stormwater Ponds
 - Outfalls
 - Lakes
 - Wetlands (separate map)
-
- AutoCad
 - Convert to GIS
 - Built from Record Drawings
 - Require ACAD files

TKDA

ENGINEERING • ARCHITECTURE • PLANNING

MS4 INSPECTION LOG 2009 - 2011



CITY OF VICTORIA



TKDA

ENGINEERING • ARCHITECTURE • PLANNING

Inspection Log

CITY OF VICTORIA, MINNESOTA

NPDES PHASE II: MS4 INSPECTION REPORT SUMMARY

Pond No.

PONDS AND BASINS

| POND NO. | LOCATION | YEAR DUE | DATE OF INSPECTION/BY (INITIAL) | COMMENTS AND REMARKS |
|----------|--|----------|---------------------------------|----------------------|
| P-1 | N OF INTERSECTION OF VIRGINIA AND THORNBERY CIRCLE | 2009 | | |
| P-2 | SW OF INTERSECTION OF VIRGINIA AND THORNBERY CIRCLE | 2009 | | |
| P-3 | NNE OF INTERSECTION OF BAYCLIFF DR AND THORNBERY CIRCLE | 2009 | | |
| P-4 | SE OF INTERSECTION OF BAYCLIFF DR AND THORNBERY CIRCLE | 2009 | | |
| P-5 | SE OF INTERSECTION OF SMITHTOWN RD AND SUNNY SHADOWS CT | 2009 | | |
| P-6 | E OF CUL DE SAC AT END OF SMITHTOWN CT | 2009 | | |
| P-7 | NE OF INTERSECTION OF ROLLING ACRES RD AND INTERLAKEN | 2009 | | |
| P-8 | E OF CUL DE SAC AT END OF YVERDON CT | 2009 | | |
| P-9 | N OF INTERSECTION OF ROLLING ACRES RD AND ST. MORITZ | 2009 | | |
| P-10 | N OF CUL DE SAC AT END OF PARKVIEW LANE | 2009 | | |
| P-11 | 500' WEST OF INTERSECTION OF TRISTEN DR AND TRISTEN KNOLL | 2009 | | |
| P-12 | S OF INTERSECTION OF RIDGEHILL RD AND TRISTEN DR | 2009 | | |
| P-13 | NE OF CUL DE SAC AT END OF HAWTHORN PLACE | 2009 | | |
| P-14 | 600' W OF INTERSECTION OF STATE HWY 5 AND HENNEPIN CTY TRAIL | 2009 | | |

Location

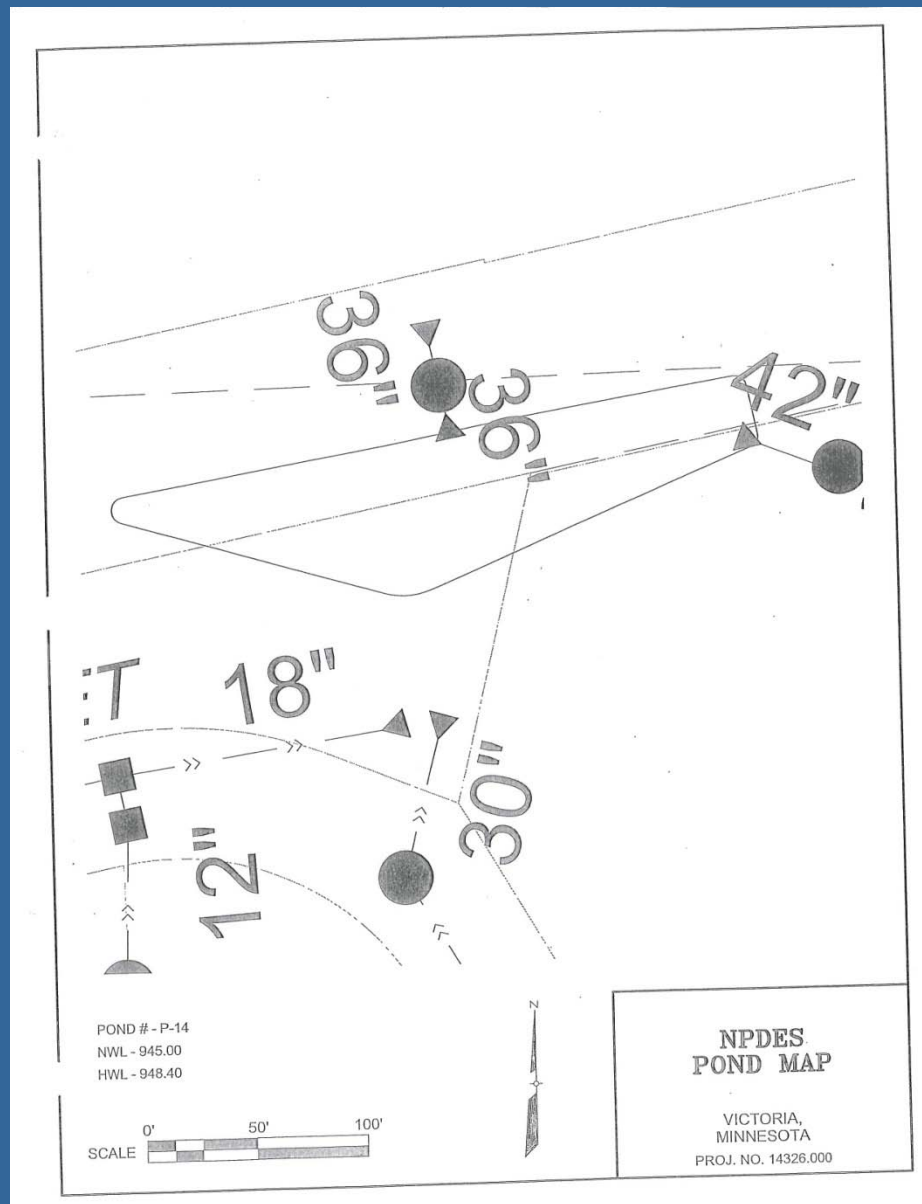
Inspection Schedule

Inspection Date

Summary Comments

- Code Assigned
 - Labeled on Map
- Excel Spreadsheet
- Outfalls
- Pollution Control Devices
- Rain Gardens
- Stormwater Ponds

Pond Map



Individual Schematic for Reference Purposes

TKDA

ENGINEERING • ARCHITECTURE • PLANNING

Maintenance Inventory



POND MAINTENANCE INVENTORY

CITY OF VICTORIA, MINNESOTA

Date: June 4, 2009
Project No. 14326.000

TKDA

ENGINEERING • ARCHITECTURE • PLANNING

Maintenance Inventory

Pond No.

Location

CITY OF VICTORIA, MINNESOTA

STORMWATER POND MAINTENANCE PROGRAM

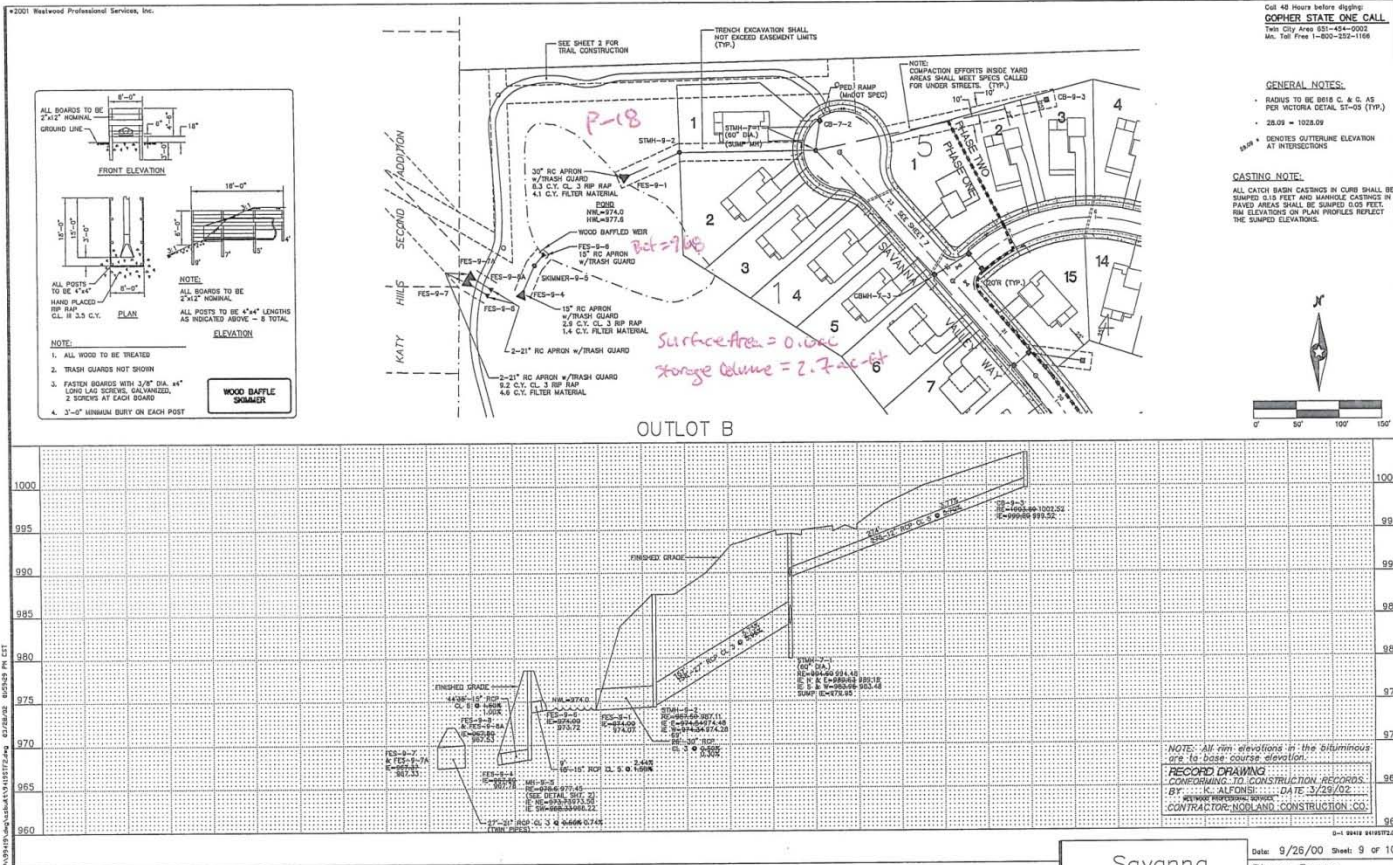
| POND NO. | LOCATION | CONSTRUCTION (YEAR) | PLANNED MAINTENANCE (YEAR) | COMMENTS |
|----------|--|---------------------|----------------------------|----------|
| P-1 | N OF INTERSECTION OF VIRGINIA AND THORNBERRY CIRCLE | 1992 | | |
| P-2 | SW OF INTERSECTION OF VIRGINIA AND THORNBERRY CIRCLE | 1992 | | |
| P-3 | NNE OF INTERSECTION OF BAYCLIFFE DR AND THORNBERRY CIRCLE | 1995 | | |
| P-4 | SE OF INTERSECTION OF BAYCLIFFE DR AND THORNBERRY CIRCLE | 1995 | | |
| P-5 | SE OF INTERSECTION OF SMITHTOWN RD AND SUNNY SHADOWS CT | 1989 | | |
| P-6 | E OF CUL DE SAC AT END OF SMITHTOWN CT | 1986 | | |
| P-7 | NE OF INTERSECTION OF ROLLING ACRES RD AND INTERLAKEN | 1997 | | |
| P-8 | E OF CUL DE SAC AT END OF YVERDON CT | 1997 | | |
| P-9 | N OF INTERSECTION OF ROLLING ACRES RD AND ST. MORITZ | 1997 | | |
| P-10 | N OF CUL DE SAC AT END OF PARKVIEW LANE | 2003 | | |
| P-11 | 500' WEST OF INTERSECTION OF TRISTAN DR AND TRISTAN KNOLL | 2001 | | |
| P-12 | S OF INTERSECTION OF RIDGEHILL RD AND TRISTAN DR | 2001 | | |
| P-13 | NE OF CUL DE SAC AT END OF HAWTHORN PLACE | 1994 | | |
| P-14 | 800' W OF INTERSECTION OF STATE HWY 5 AND HENNEPIN CTY TRAIL | 2003 | | |
| P-15 | SW OF INTERSECTION OF STATE HWY 5 AND HENNEPIN CTY TRAIL | 2003 | | |
| P-16 | 750' E OF INTERSECTION OF QUAMOCLIT AND STIEGER LAKE BLVD | 1977 | | |
| P-17 | NNE OF CUL DE SAC AT END OF ARETZ CT | 1992 | | |
| P-18 | W OF CUL DE SAC AT END OF SAVANNA VALLEY WAY | 2002 | | |
| P-19 | NE OF HOLY FAMILY CATHOLIC HIGH SCHOOL | | | |
| P-20 | E OF HOLY FAMILY CATHOLIC HIGH SCHOOL | 2000 | | |
| P-21 | NW OF APPLEWOOD CIRCLE | 2003 | | |
| P-22 | N OF CUL DE SAC AT END OF GOLD POINT | 2002 | | |
| P-23 | E OF INTERSECTION OF KELZER POND DR AND THRUSHWOOD CIRCLE | 1994 | | |
| P-24 | NW OF INTERSECTION OF TRILLIUM LN AND KELZER POND DR | 2001 | | |
| P-25 | NW OF INTERSECTION OF CTY RD 18 AND NARCISSUS ST | 1994 | | |

Planned Maintenance Year

Comments

Year Built

Record Drawing



Westwood Professional Services, Inc.
 728 Washington Blvd
 Eden Prairie, MN 55344
 Phone: 952/937-0100 Fax: 952/937-9822

I hereby certify that this plan was prepared by me or under my direct supervision and that I am a duly registered professional engineer in the State of Minnesota.
 License No. 19153
 Date: 1/22/01 Exp. Date: 1/15/03

Prepared for: **Hartman Communities, LLC**
 MD 69 1107 Hazelle Boulevard
 Chaska, Minnesota 55318

Savanna Valley
 Victoria, Minnesota

P-18

Maintenance Plan

- Prioritize Maintenance
 - Pond Age
 - Inspection Records
 - Apparent Sediment
 - Available Funding
- Create Schedule
- Confirm Funding and Begin Implementation
- Verify specific conditions through site survey
- Prepare necessary documentation
 - Plans and Specifications, Permitting, as needed
- Complete maintenance

Questions?
Cara L. Geheren, P.E.
City Engineer

TKDA

ENGINEERING • ARCHITECTURE • PLANNING

UNIVERSITY OF MINNESOTA
EXTENSION

