



Planting Decisions for Corn In the Northwest Minnesota

**Northwest Research & Outreach Center
Crops and Soils Field Day**

Crookston, MN - July 14, 2010

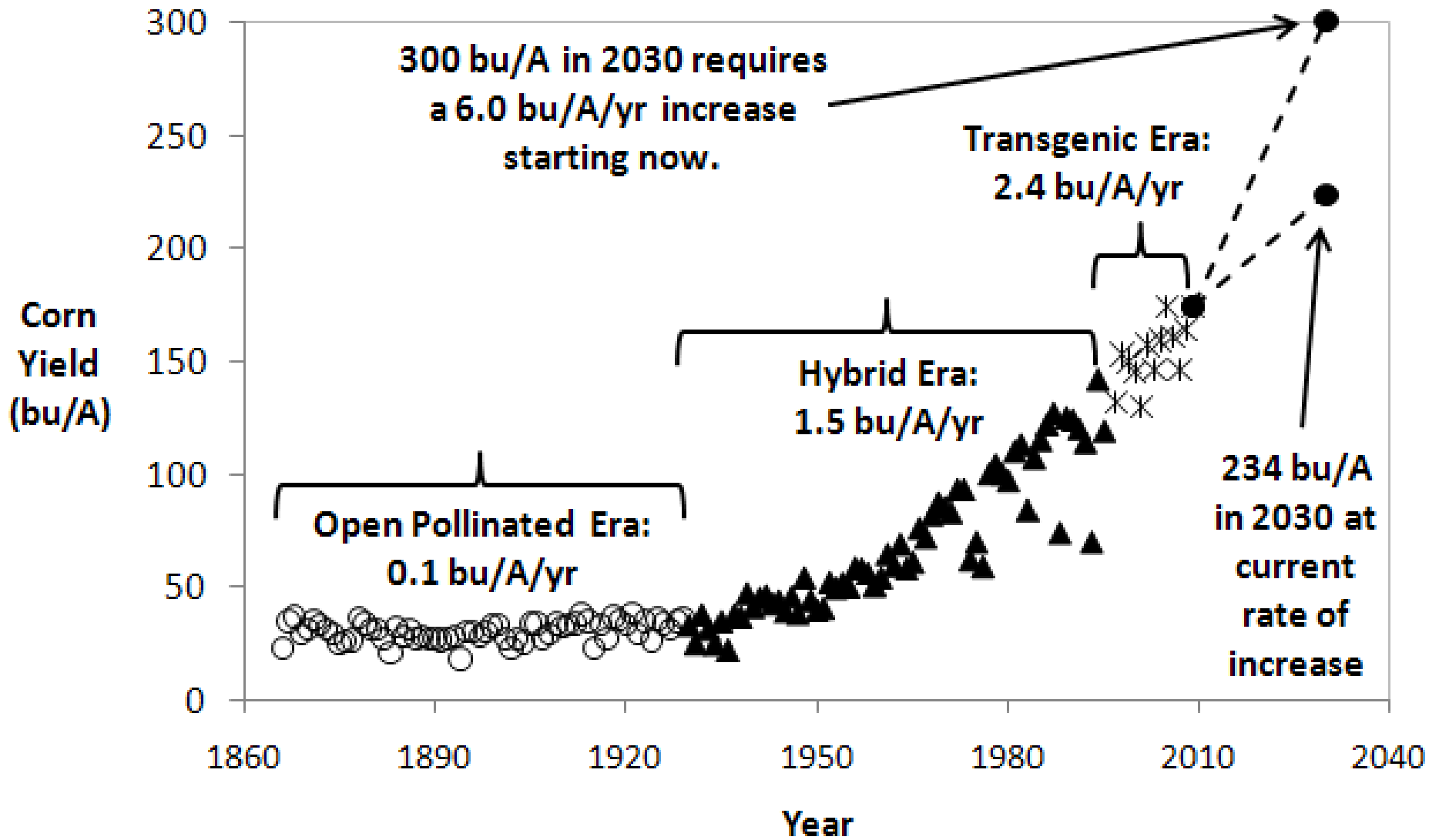
Jeff Coulter, Extension Corn Agronomist
coult077@umn.edu



UNIVERSITY OF MINNESOTA
EXTENSION

www.extension.umn.edu/corn

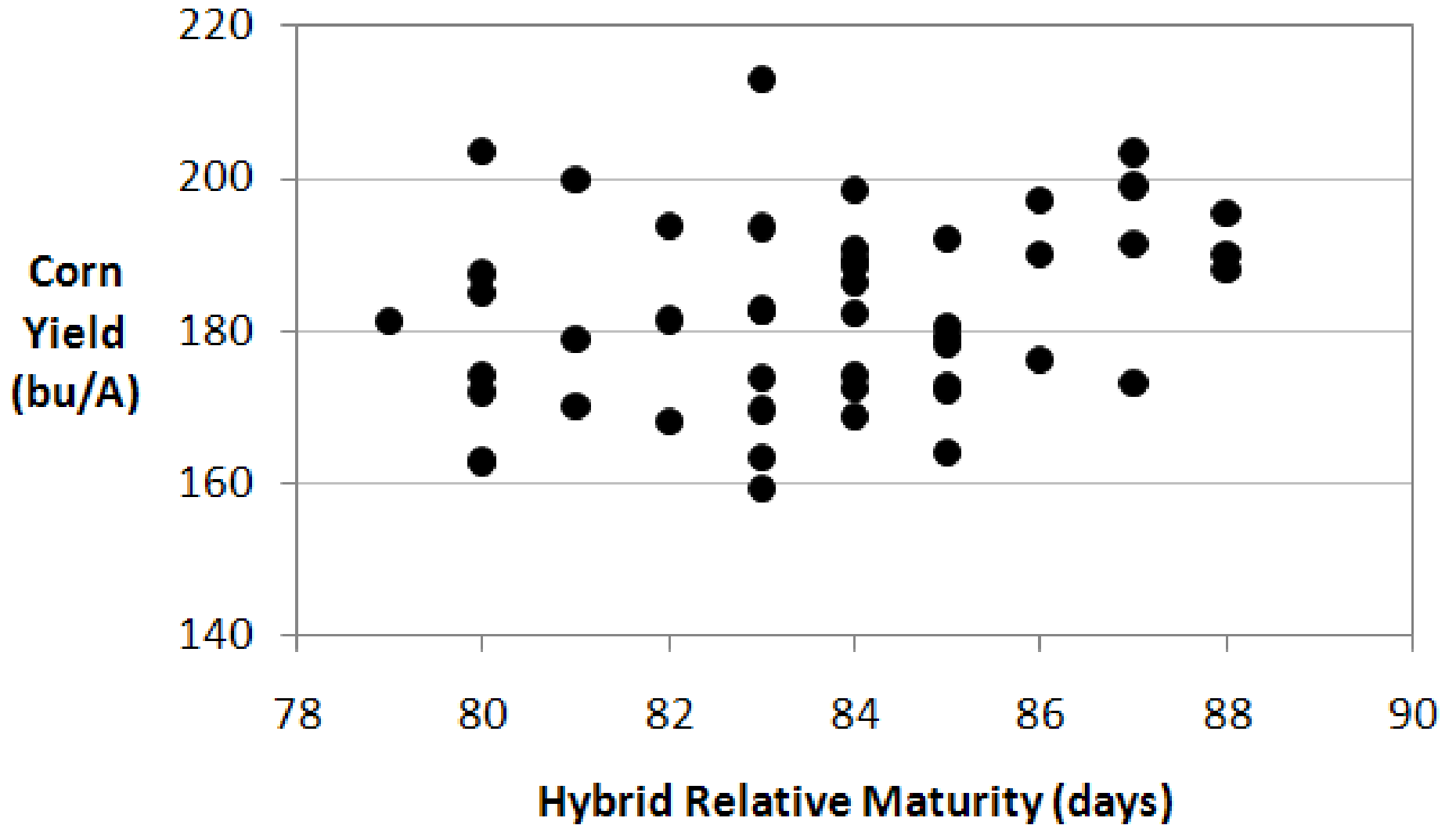
Minnesota Corn Yield: 1866 to 2030



Corn Relative Maturity (RM) for Crookston, MN

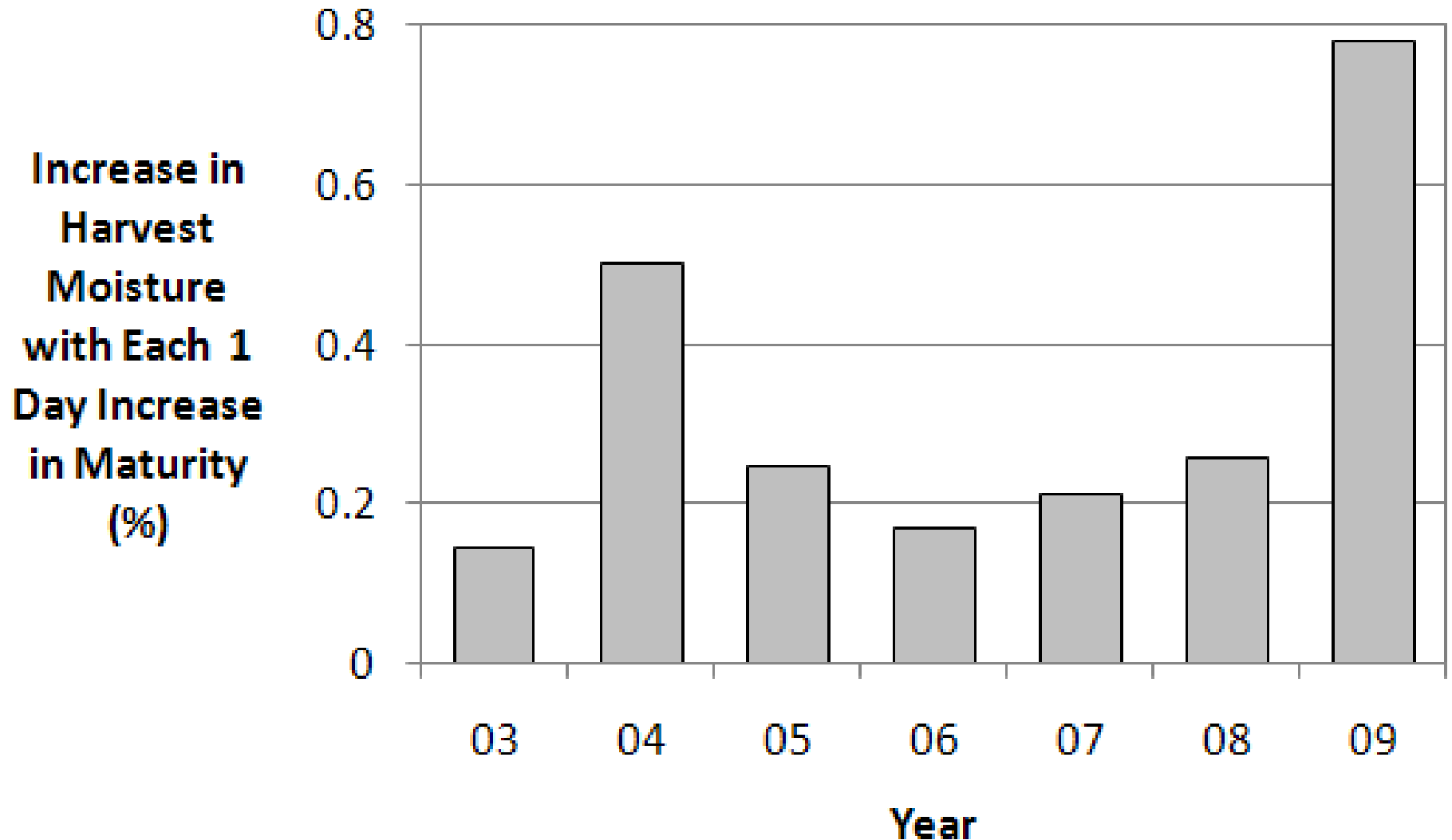
Planting date	GDD to 10 days before first freeze (Sept. 23)	Latest corn RM for available GDD
April 20	2,147	84
April 30	2,103	83
May 10	2,033	80
May 20	1,939	77
May 30	1,821	73

On-Farm Hybrid Trial - Crookston, 2008

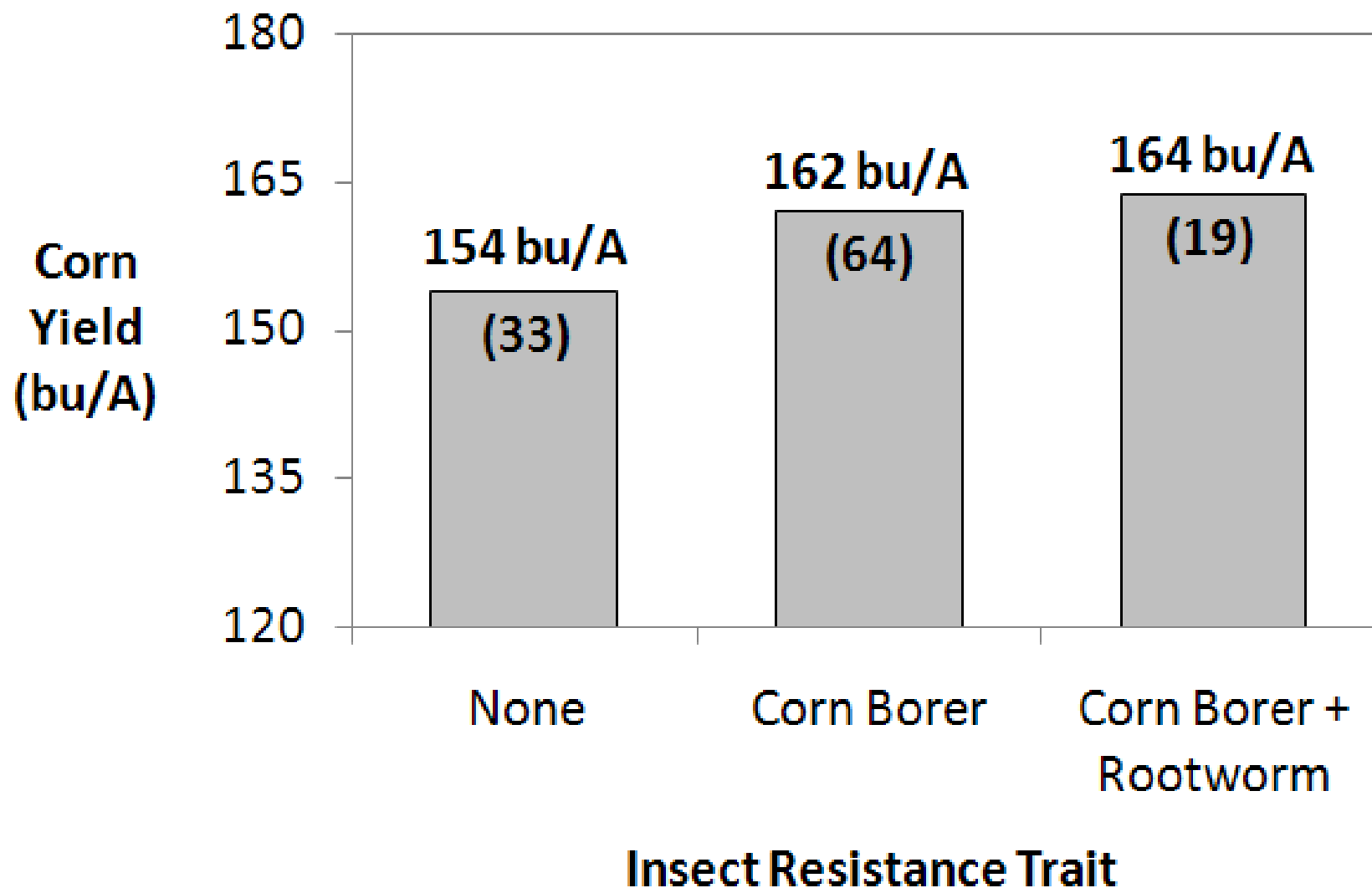


Data from Russ Severson

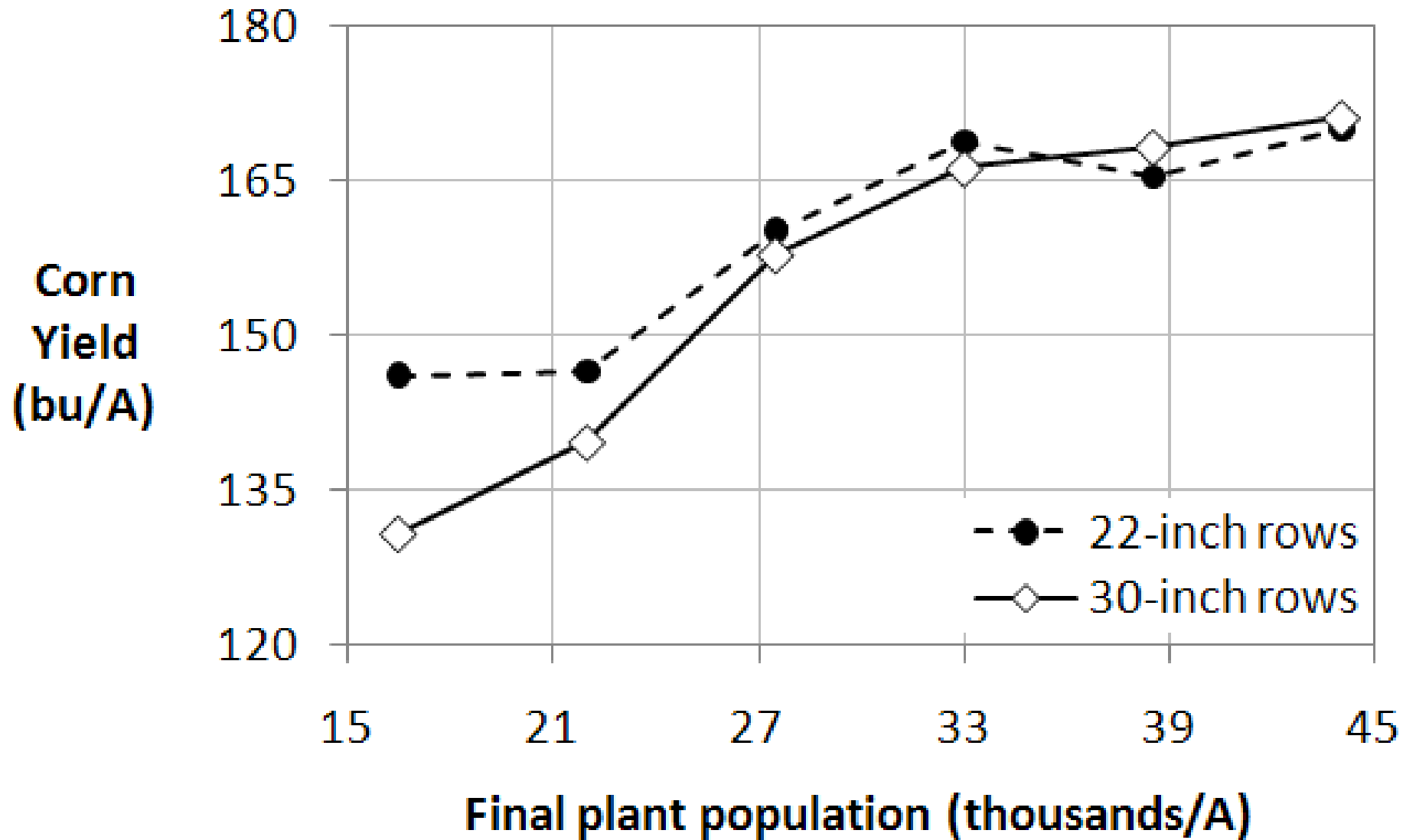
Corn Relative Maturity vs. Harvest Moisture (Crookston Hybrid Trials: 2003 to 2009)



Crookston Hybrid Trials - 2006 to 2008 (85-day and earlier hybrids)

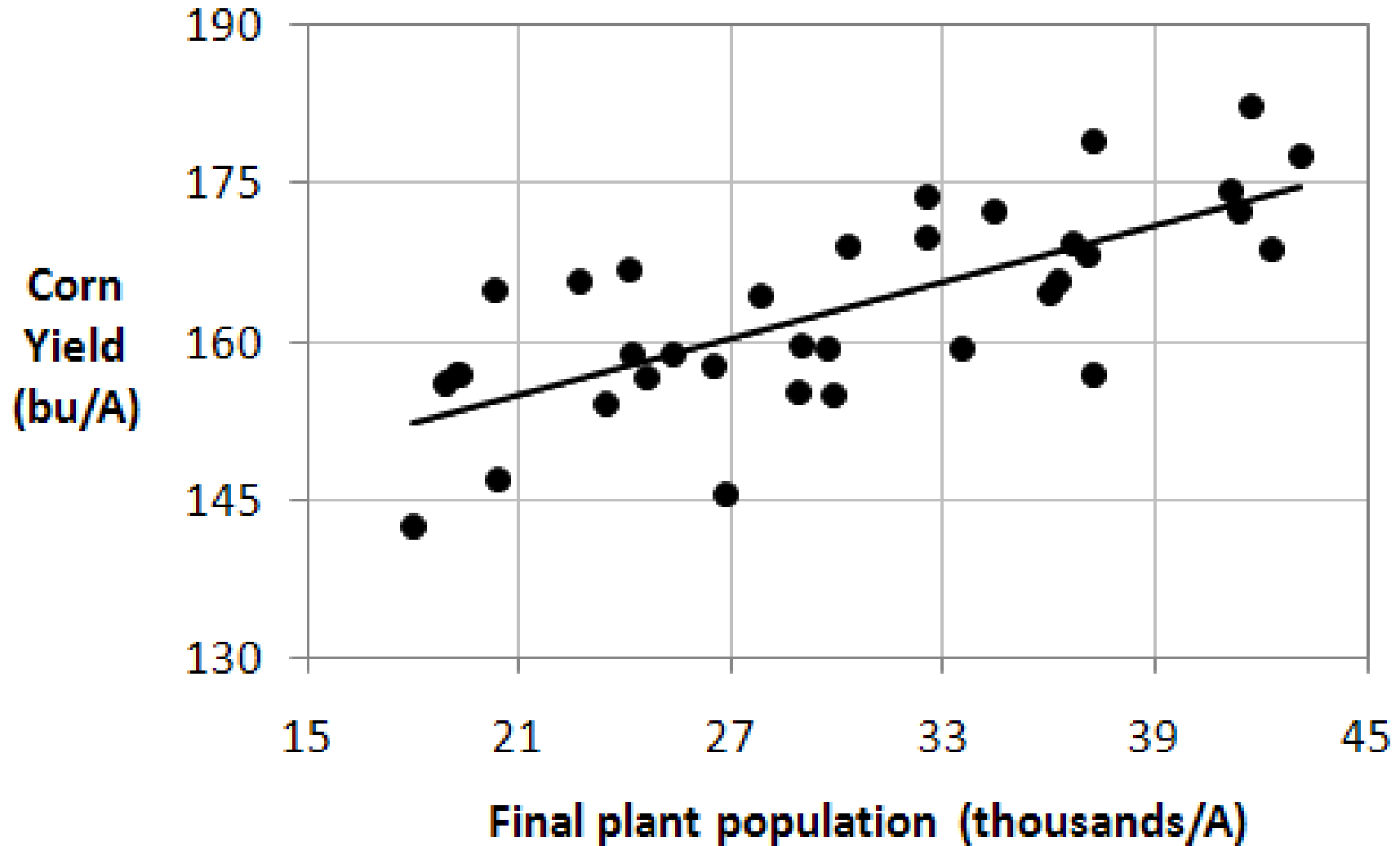


Crookston, 2009 - Pioneer 39V07 (80-day)

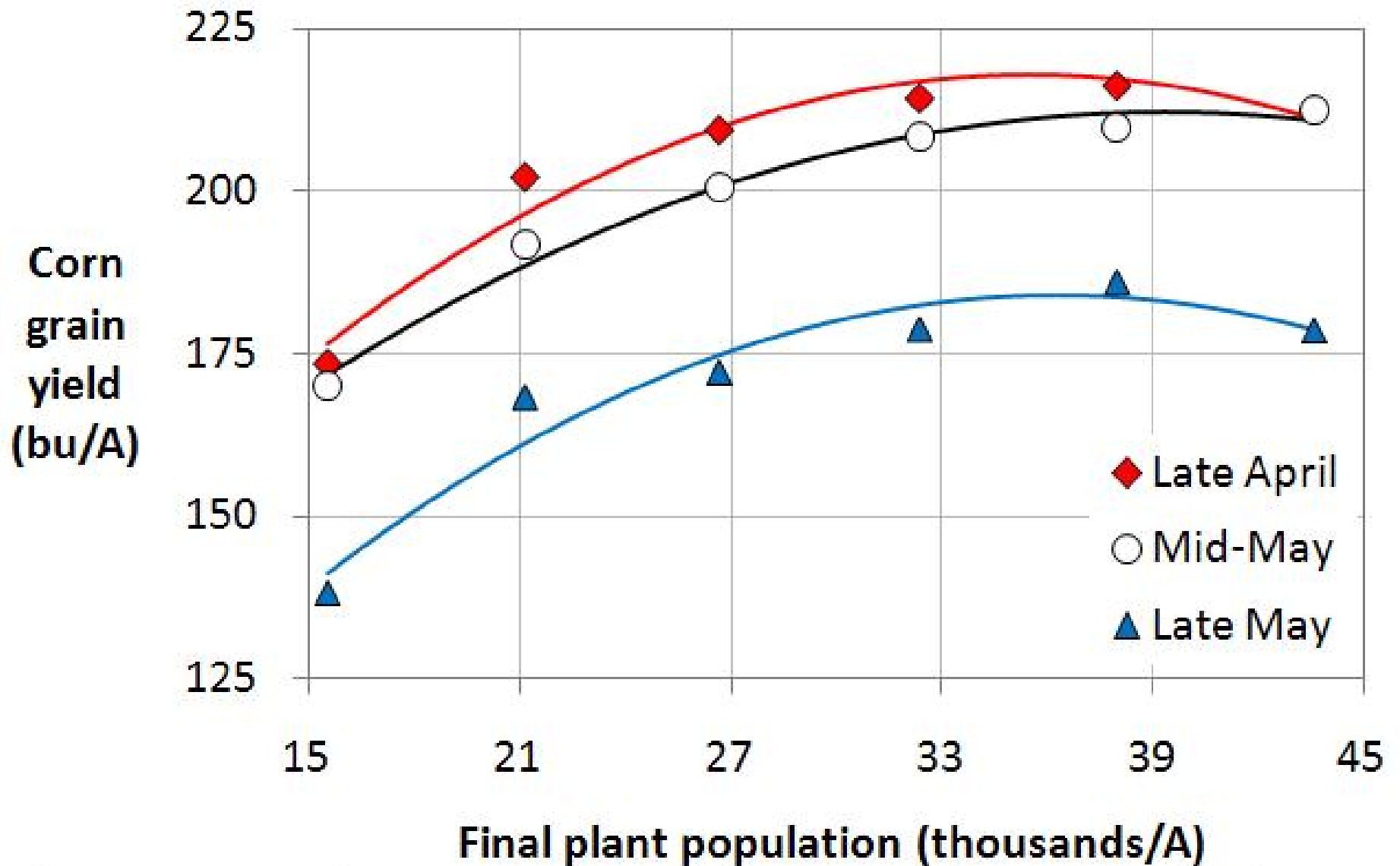


Ashby, MN - 2009

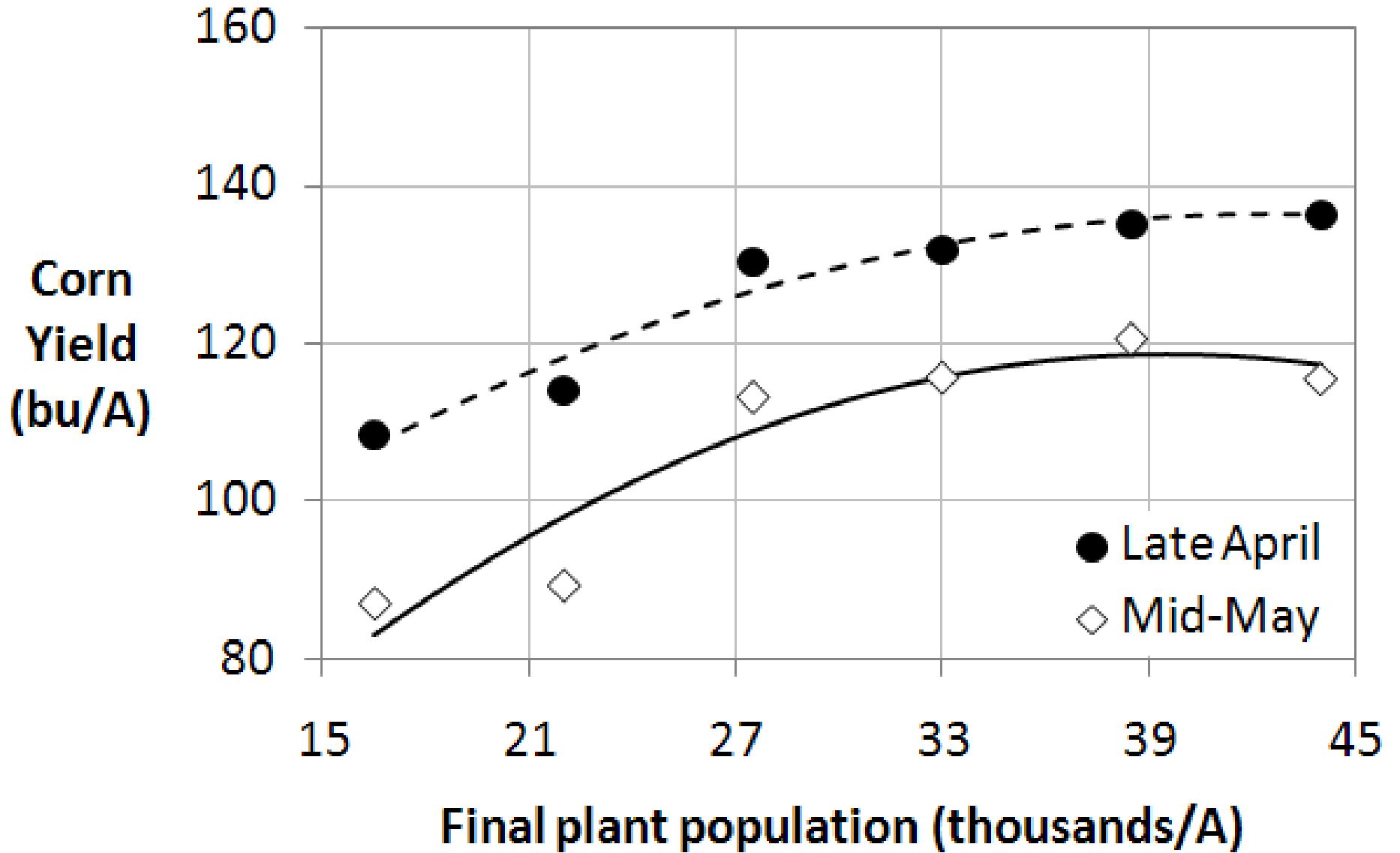
(2 hybrids: 89-day and 94-day)



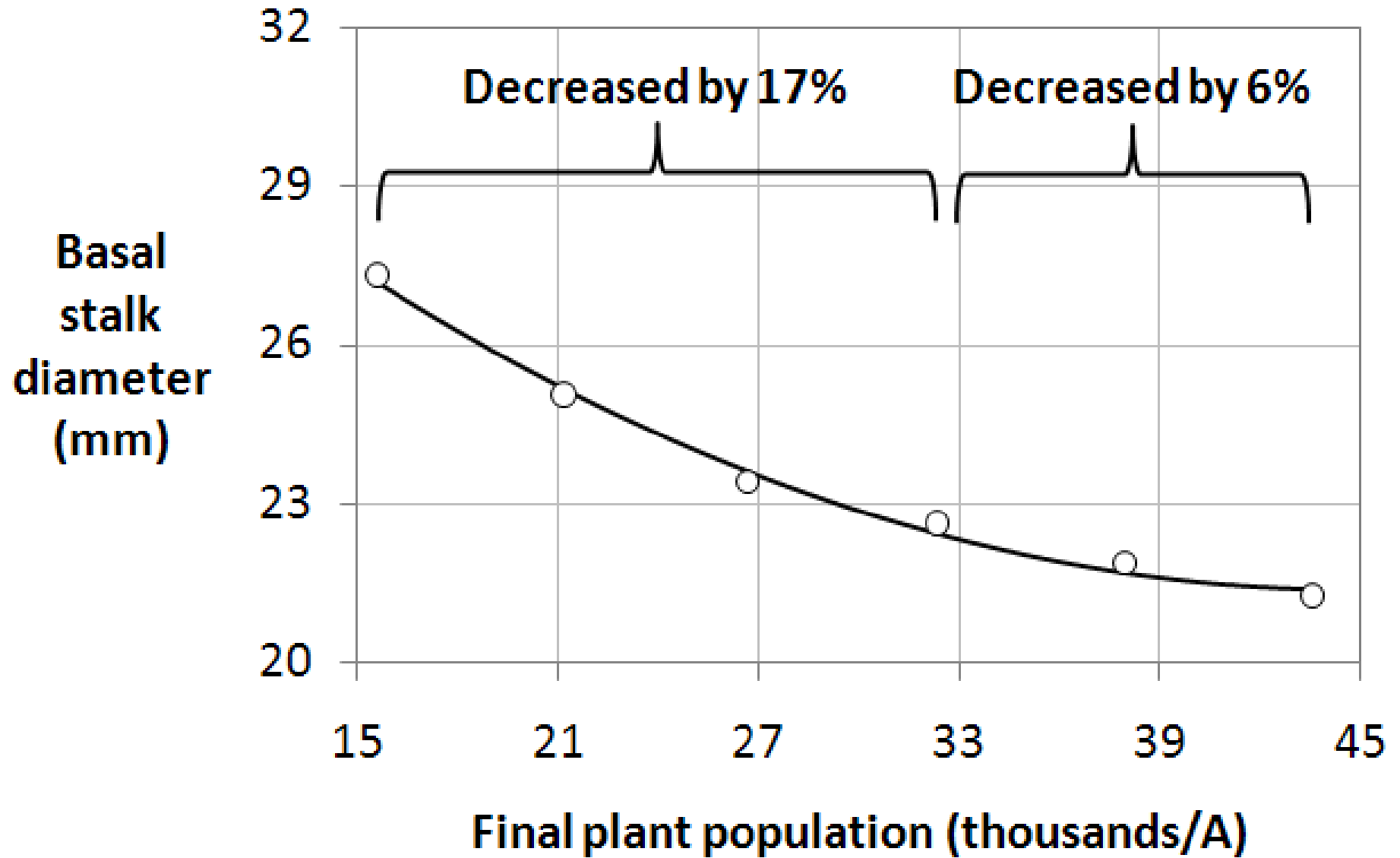
Lamberton & Waseca, MN - 2008 & 2009



Morris, MN - 2009



Lamberton & Waseca, MN - 2008 & 2009



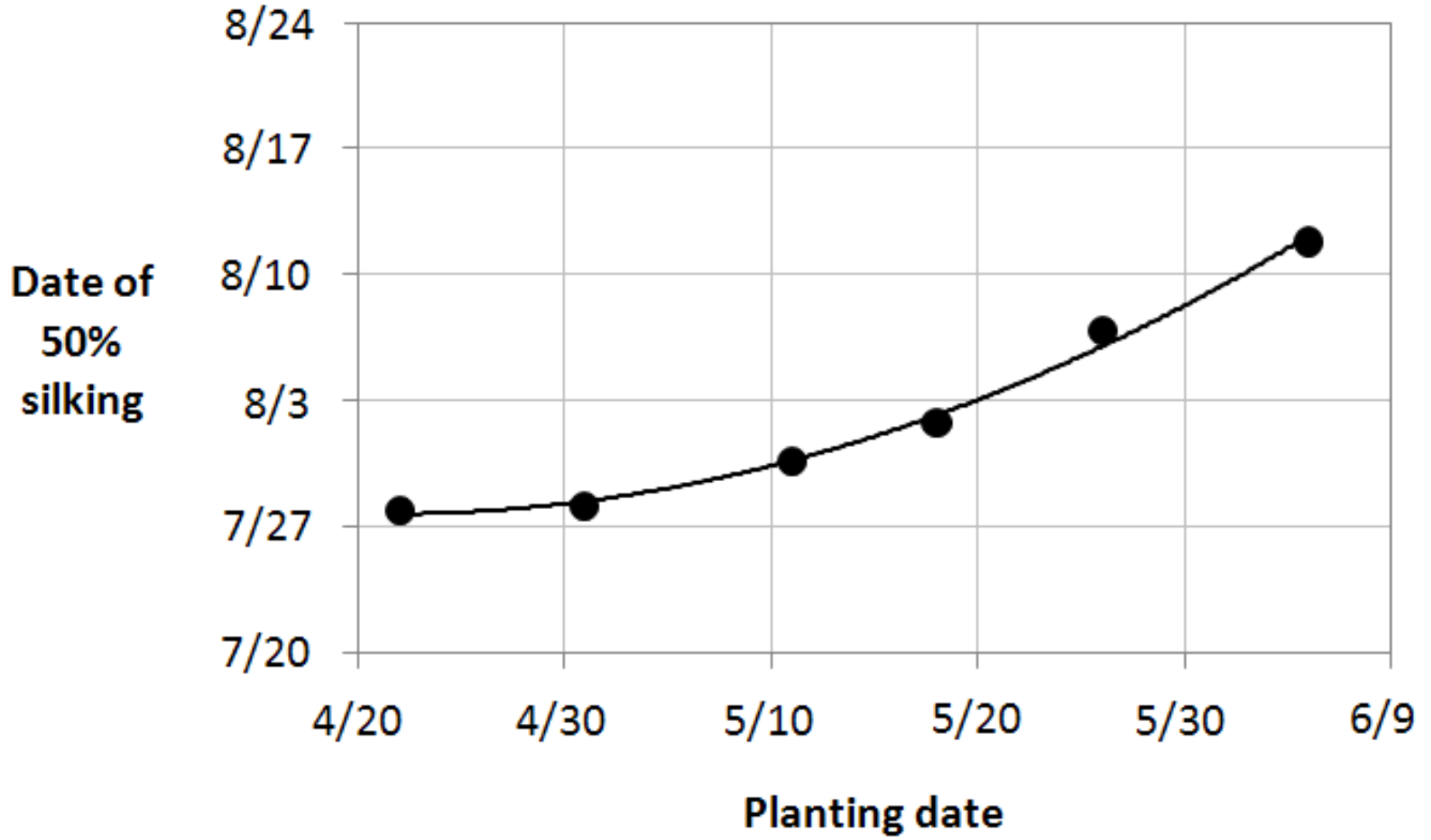
Morris, MN - 2009 (Average of 6 Hybrids)

Planting date	Days to emergence	GDD lost for late planting	Crop progress on July 8
April 22	22	0	V11, 60"
May 1	15	40	V10, 58"
May 11	11	102	V9, 55"
May 18	10	180	V9, 52"
May 26	9	271	V7, 40"
June 5	12	378	V6, 33"

Morris, MN - 2010 (Average of 6 Hybrids)

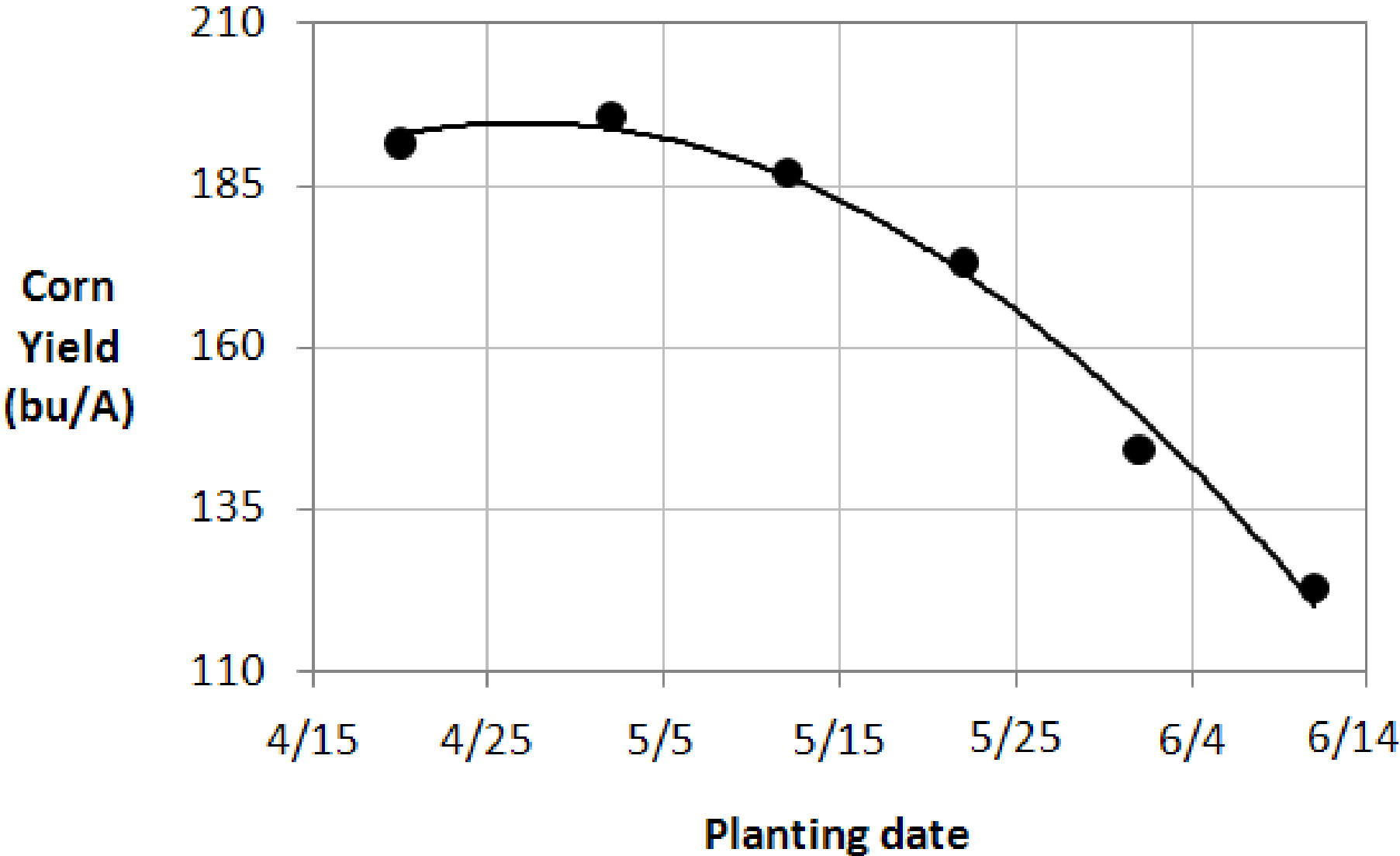
Planting date	Days to emergence	GDD lost for late planting	Crop progress on June 30
April 22	24	0	V10, 56"
May 3	13	75	V10, 63"
May 10	9	88	V9, 61"
May 19	7	154	V8, 47"
May 28	8	318	V6, 31"
June 7	8	481	V4, 18"

Morris, MN - 2010 (Average of 6 Hybrids)



Lamberton & Waseca, MN - 2009

(Average of 6 Hybrids)



**Thanks to the
MN Corn Growers Association and the
MN Corn Research and Promotion
Council
for funding this research!**





Thanks!



UNIVERSITY OF MINNESOTA
EXTENSION

www.extension.umn.edu/corn