

**OBJECTIVES**

Discovering how genetic selection and breeding impact performance and carcass traits is a critical step in preparing for today's value-based market. This program provides an opportunity for cattlemen to discover, understand and, if necessary, re-direct genetic selection and breeding efforts in their cowherds. Additionally, this program lends an opportunity for cattlemen to test retained ownership as an option to enhance profitability of their cowherds.

**GENERAL INFORMATION:**

Participants contract to have their cattle custom fed in groups of two or more steer or heifer calves although, we recommend groups of five or more steers or heifers. Cattlemen participating in the program should make sure that their cattle have permanent identification.

**PRE-PROGRAM MANAGEMENT GUIDELINES:**

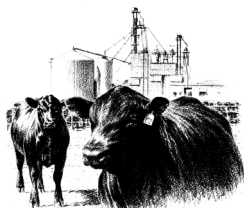
Participants must follow the pre-program management outlined in this brochure. Co-mingling of cattle from various sources requires that strict pre-program management be followed.

Ideal weight for entry into the program is between 400 and 700 pounds to ensure cattle reach appropriate slaughter weight and carcass quality grade. Steers and heifers must be dehorned, and steers healed from castration prior to delivery to the feedlot. Cattle must be vaccinated at least 21 days, according to Beef Quality Assurance procedures, prior to delivery using the following protocol:

- 7- or 8-way clostridial bacterin
- Modified live IBR, BVD, PI<sub>3</sub>, and BRSV vaccine
- *Mannheimia (Pasteurella) haemolytica*

Cattle must be TB tested in accordance with applicable regulations. Participants are responsible for delivery of cattle to Rosemount.

**CATTLE ENROLLED IN THIS PROGRAM SHOULD NOT BE IMPLANTED!**



**ADVANTAGES OF ENTERING YOUR CATTLE IN THE MINNESOTA CARCASS MERIT PROGRAM:**

- ✓ Discovery of the feedlot performance and carcass value of your calves
- ✓ Use of feed intake, weight gain and efficiency, and carcass data to determine effects of genetic selection
- ✓ Test concept of retained ownership to enhance profitability of cowherd
- ✓ Commingling of cattle into larger groups to improve marketability
- ✓ Alternative outlet for 2011 calf crop

**COSTS TO THE PRODUCER:**

- ✓ \$30/head entry fee
- ✓ Feed costs plus markup to cover shrink
- ✓ \$0.25/head daily yardage fee
- ✓ Any veterinary and medicine costs

The entry fee is required at time of delivery. All other costs are charged against the final selling price of calves. After calves are sold, producers are sent a check with costs deducted. After all cattle are harvested, each producer will receive a detailed report showing live performance, carcass quality, and profitability of their cattle.

**LOCATION: ROSEMOUNT UMORE PARK**

The Minnesota Carcass Merit Program will be held at the Rosemount Research and Outreach Center at UMore Park. Steers and heifers are both accepted.

**ENTRY DEADLINE: OCTOBER 14, 2011**

**CATTLE DELIVERY: NOVEMBER 1-2, 2011**

**PLEASE PLAN TO ATTEND:**

**INFORMATION DAY, SEPTEMBER 29, 2011 AT 6:00 PM AT ROSEMOUNT UMORE PARK ADMIN BUILDING 1605 160TH STREET W, ROSEMOUNT, MN 55068**

**CONTACTS:**

Dr. Alfredo DiCostanzo  
612-590-7395  
dicos001@umn.edu

Dr. Grant Crawford  
320-296-6716  
craw0105@umn.edu

More information available at our website:  
[www.extension.umn.edu/beef](http://www.extension.umn.edu/beef)



**TABLE 1. PRODUCTION AND PROFITABILITY**

Year	ADG	Cost of Gain, \$/cwt	Fat Depth, in.	Ribeye Area, in. <sup>2</sup>	Yield Grade	% Choice
Avg. 1993	2.67	48.70	0.54	12.35	2.7	38.0
Avg. 1994	2.98	45.00	0.43	13.60	2.2	49.8
Avg. 1995	2.98	65.13	0.39	13.30	2.3	59.0
Avg. 1996	3.19	47.91	0.42	12.36	2.3	67.0
Avg. 1997	3.09	38.65	0.49	12.96	2.6	43.0
Avg. 1998	3.48	34.97	0.46	12.34	2.8	86.2
Avg. 1999	3.58	38.17	0.32	12.55	2.8	74.5
Avg. 2000	3.15	40.67	0.31	12.89	2.6	62.8
Avg. 2004	3.71	38.40	0.44	12.62	3.1	72.1
Avg. 2005	3.36	47.07	0.38	13.01	2.0	51.5
Avg. 2006	3.34	56.00	0.34	11.04	2.3	44.8
Avg. 2007	3.50	72.43	0.42	13.47	2.4	65.2
Avg. 2008	3.35	67.85	0.45	12.50	3.0	75.8
Avg. 2009	3.07	64.15	0.43	13.05	2.6	68.0
Avg. 2010	2.68	103.00	0.44	14.20	2.3	57.3

**Table 2. Projected profit or loss for steers weighing 600 lb purchased in November 2011 and sold in June 2012**

	In wt 600 lb	Out wt 1300 lb	Gain 700 lb	Cost of gain \$1.05/lb	Cost, \$ \$735
<b>Purchase, \$/lb</b>	<b>\$1.30</b>	<b>\$1.35</b>	<b>\$1.40</b>	<b>\$1.45</b>	<b>\$1.50</b>
<b>Sale, \$/lb</b>					
\$1.15	(\$36)	(\$66)	(\$96)	(\$126)	(\$156)
\$1.20	\$28	(\$2)	(\$32)	(\$62)	(\$92)
\$1.25	\$92	\$62	\$33	\$3	(\$28)

# 2011-12 MINNESOTA CARCASS MERIT PROGRAM



The Minnesota Carcass Merit Program provides an opportunity for seedstock and commercial cow-calf producers to evaluate how their genetics perform in the feedlot and on the rail. During highly volatile markets, knowing and understanding whether cattle can convert feed to gain efficiently, and reach at least 65% Choice with a Yield Grade of 3 or less is necessary for the beef industry to remain competitive.

### Program Sponsors

**University of Minnesota Beef Team**  
**Department of Animal Science**  
**UMore Park, Rosemount**  
**Merck Animal Health**  
**Pfizer Animal Health**  
**Quality Liquid Feeds**  
**Western Wisconsin Energy**



**Minnesota Carcass Merit Program**  
**Extension Regional Office**  
**1390 Highway 15 South, Suite 201**  
**Hutchinson, MN 55350**

## ENROLLMENT INFORMATION

NAME: \_\_\_\_\_

ADDRESS: \_\_\_\_\_

CITY, STATE, ZIP CODE: \_\_\_\_\_

TELEPHONE: (\_\_\_\_) \_\_\_\_\_

E-MAIL: \_\_\_\_\_

If steers or heifers enrolled in this program are subject to a security agreement, they must have lender approval for entry into this program. The program assumes no risk.

## CATTLE INFORMATION:

All cattle will be fed at Rosemount UMore Park. We have capacity for up to 500 head. Cattle will be allowed in the program on a first-registered, first-served basis.

**NUMBER OF CATTLE:** \_\_\_\_\_ **STEERS** \_\_\_\_\_ **HEIFERS**

Producers are encouraged to enroll at least 5 steers or heifers per sire group. The program will be cancelled if fewer than 80 head are enrolled.

**ENTRY DEADLINE: OCTOBER 14, 2011**

**CATTLE DELIVERY: NOVEMBER 1-2, 2011**

## COST AND PAYMENT INFORMATION:

The entry cost is \$30/head. Mail this form along with a non-refundable check payable to 2011 Carcass Merit Program by the entry deadline to:

Dr. Grant Crawford  
U of M Extension Regional Office  
1390 Hwy 15 S, Suite 201  
Hutchinson, MN 55350

## ADDITIONAL INFORMATION:

After processing your entry, you will receive further instructions, program health sheets, and other information.

## QUESTIONS? PLEASE CONTACT:

**Alfredo DiCostanzo:** 612-590-7395

E-mail: [dicos001@umn.edu](mailto:dicos001@umn.edu)

**Grant Crawford:** 320-296-6716

E-mail: [craw0105@umn.edu](mailto:craw0105@umn.edu)