

Farm Bill Prospects and the Changing Economics of Agriculture

2007 Minnesota Chapter ASFMRA
Summer Seminar
Duluth, MN
July 12, 2007

Kent Olson
Applied Economics, University of Minnesota

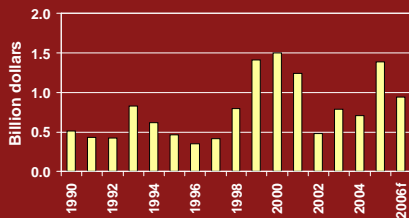


Today's Outline

- A bit of background
- Farm Bill Prospects
- Changing Economics of Agriculture
- Closing comments



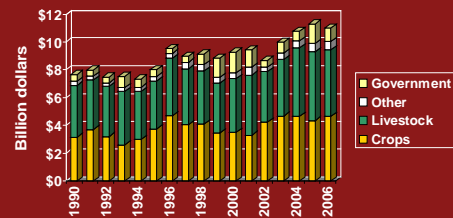
Total Government Payments paid to Farmers in Minnesota, 1990-2006f



Source: USDA, ERS



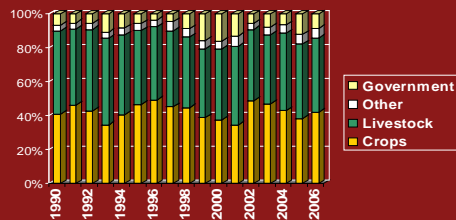
Sources of Farm Cash Receipts, Minnesota, 1990-2006f



Source: USDA, ERS



Sources of Farm Cash Receipts, Minnesota, 1990-2006f



Source: USDA, ERS

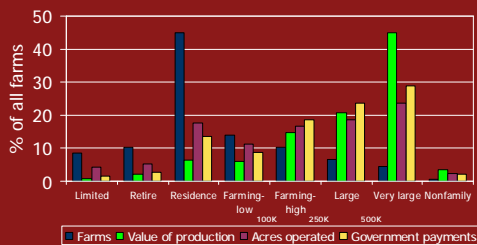


USDA Farm Typology

- **Small Family Farms**: sales < \$250,000
 - Limited Resources
 - Retirement
 - Residential/lifestyle
 - Farming occupation - low sales < \$100,000
 - Farming occupation - high sales between \$100,00 and \$250,000
- **Large family farms**: sales between \$250,000 and \$499,999
- **Very large family farms**: sales over \$500,000
- **Nonfamily farms**



Shares of farms, production, acres, and government payments by USDA typology: Minnesota 2005



Source: USDA, ERS

Farm Bill Prospects

Three main alternatives:

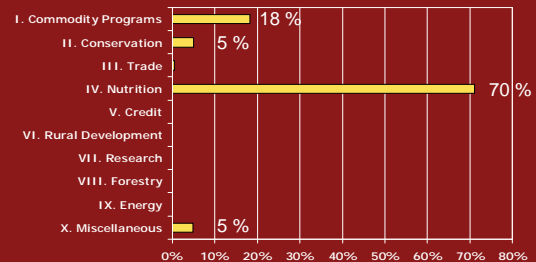
- Ø House Ag Committee
- Ø FARM21
- Ø Senate Ag Committee

Forces affecting policy choices

- Budget
- Trade issues
- Energy
- Environmental concerns
- Public perceptions
- Politics, national & global
- Current price levels
- Budget, did I mention that yet?

Estimated Expenditures for 2002 Farm Bill

– Each title's share of \$782,025 million (over 10 years)



Source: USDA ERS report on CBO's March 2002 estimate

House Ag Committee, main points

- Continue Commodity programs
 - With some adjustments in direct payments, loan rates, and target prices
- Increased Conservation funding
- Increased Energy funding
 - IF “cost offset can be found”
- Rural Development, Nutrition

FARM21, main points

- Risk Management Accounts
 - Save for poor years, rural investments
 - Government subsidized
- Discontinue current safety net payment programs (DP, CCP, LDP)
 - Payments into RMAs for first year or two
- Conservation, Energy, Rural Development, Nutrition

Senate Ag Committee

- Harkin has said change is needed
 - But FARM21 is too much
- Decreased direct payments
- More for conservation, energy, rural development
- More for nutrition programs



University of Missouri
EXTENSION

Next Steps?

- Interesting debate in House
 - Next week in House Ag Committee
 - Perhaps a “revolt” on the floor
- Senate debate
- Conference committee decisions
- Extension for 2 years?



University of Missouri
EXTENSION

“The Farm Bill” is not the only policy to affect farms

- Rural policy
- Highways
- Monetary policy
- International trade
- Other country's policies
- Environment
- Energy
- Immigration
- Science
- Zoning
-



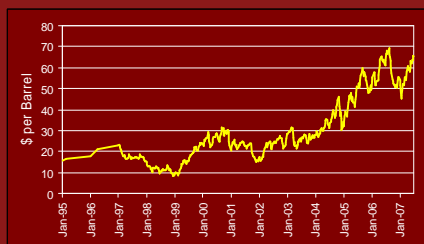
University of Missouri
EXTENSION

Changing Economics of Agriculture



University of Missouri
EXTENSION

Crude Oil, U.S. Spot price



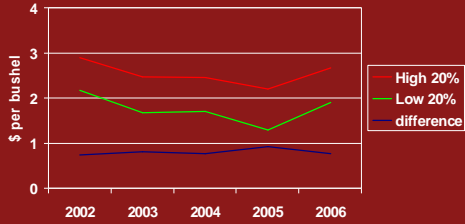
University of Missouri
EXTENSION

Diesel, Weekly U.S. Retail Price



University of Missouri
EXTENSION

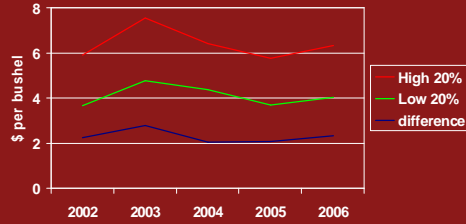
Corn Production Costs, SW MN



Costs are total direct and overhead expenses less Government & other income plus unpaid labor & management
Source: FINBIN, CFFM



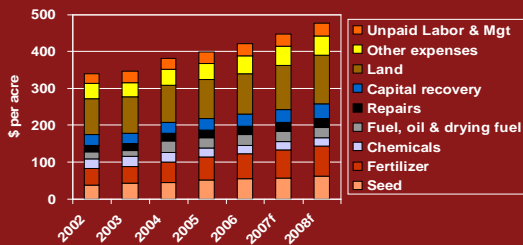
Soybean Production Costs, SW MN



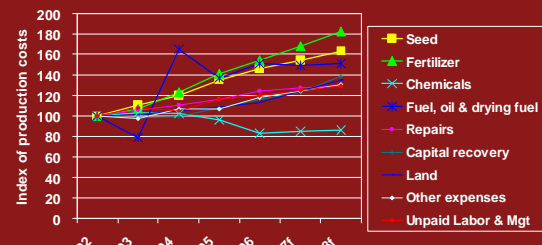
Costs are total direct and overhead expenses less Government & other income plus unpaid labor & management
Source: FINBIN, CFFM



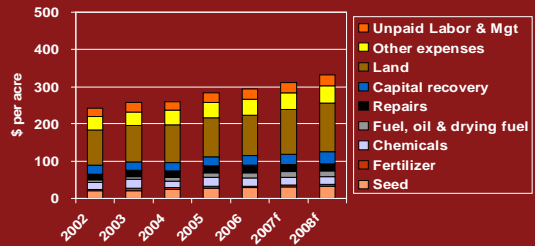
Corn Production Costs, SW MN



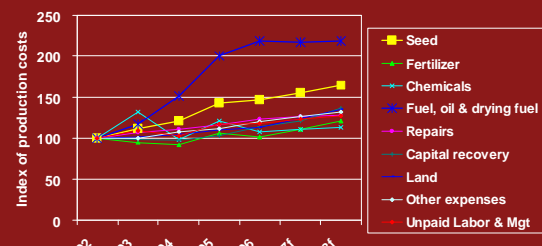
Corn Production Cost Indexes, SW MN

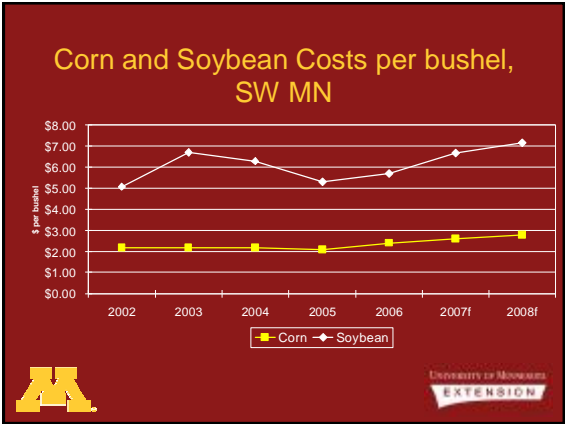


Soybean Production Costs, SW MN

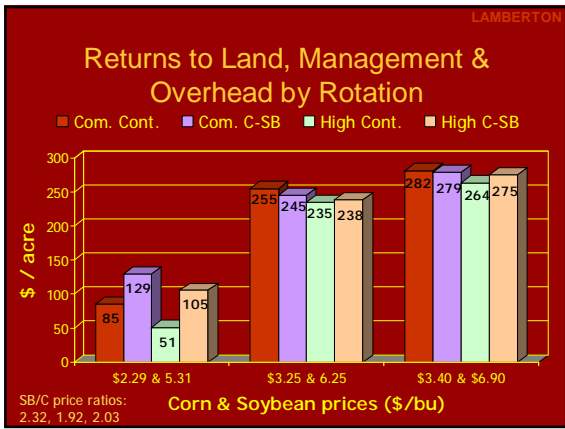
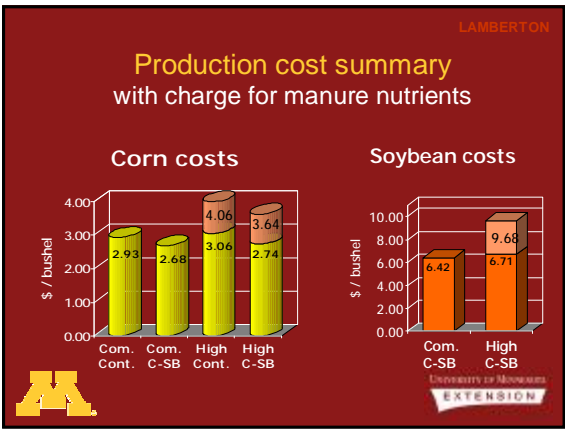


Soybean Production Cost Indexes, SW MN





- ### High Input Study
- Corn-Soybean and Continuous Corn
 - Common practices strategy
 - University or common recommendations
 - Fall urea or anhydrous, some starter fertilizer
 - 34,000 seeds/ac for corn
 - High Input strategy
 - Fall urea, plus beef manure in alternate years
 - Higher spring NPK plus sulfur and zinc, higher starter, side-dress N in June
 - 38,000 seeds per acre
 - Weed control was the same
 - Insecticide applied to continuous corn



- ### Concluding comments
- “High Input” has highest yields
 - C-SB rotation has corn higher yield
 - In both “Common” and “High”
 - “Common Practices” has lowest costs
 - Both per acre and per bushel
 - “Common Practices” is most profitable

Thank you!

Questions, comments

Kent Olson
 Applied Economics
 612-625-7723 kdolson@umn.edu

www.farmmanagement.umn.edu
 for the link to these slides and other papers